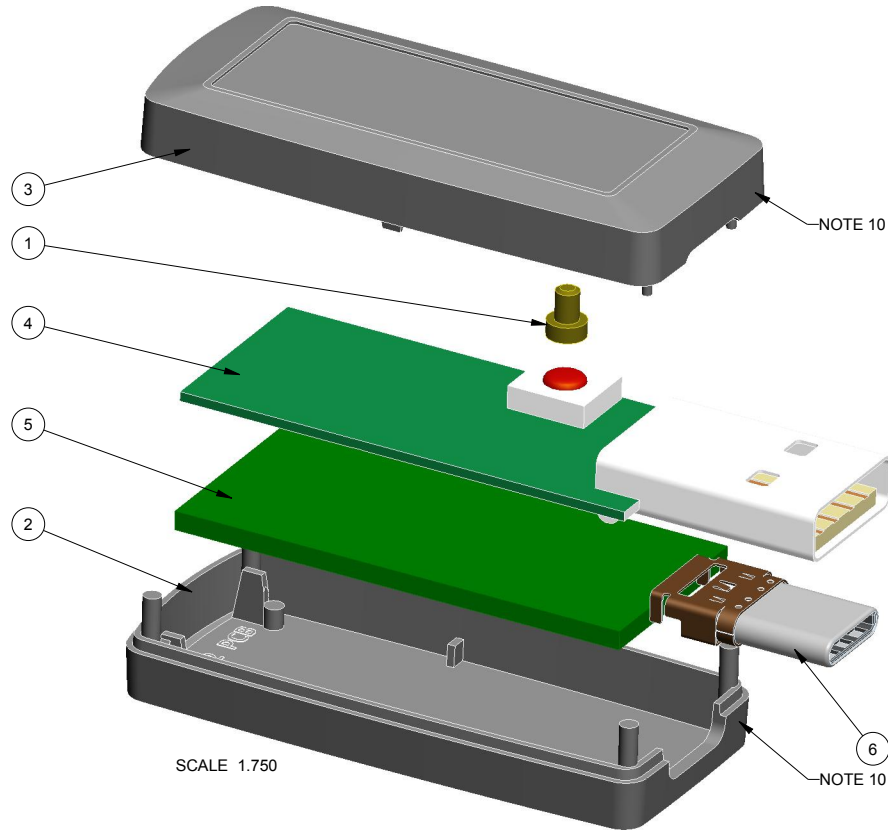


180804(x) CONFIGURATIONS								
	-S	-U	-62U	-62C	-SB	-UB	-62UB	-B
180804 COVER	1							
180804 COVER w/ TYPE A USB OPENING		1	1					
180804 COVER w/ TYPE C USB OPENING				1				
180804 COVER w/ BUTTON HOLE					1		1	
180804 COVER w/ TYPE A USB AND BUTTON HOLE						1		
180804 BASE	1				1			
180804 BASE w/ TYPE A USB OPENING		1				1		
180804 BASE w/ TYPE C USB AND .062" PCB				1				
180804 BASE w/ TYPE A USB AND .062" PCB			1				1	
180804 BUTTON								1

R E V I S I O N					
REV.	DRAWN BY	ECO No	DESCRIPTION	DATE	APPROVE
1	M BOYER		PRELIMINARY RELEASE	2005-May-04	D.C.
			REVISIONS 2-11 ARCHIVED ON REV 12.1		
			REVISIONS 12.0 - 13.1 ARCHIVED ON REV 13.1		
14.0	M BOYER	02316	UPDATE CONFIGURATION TREE	2016-Apr-20	D.C.
15.0	M BOYER	04516	ADD .062" PCB OPTION TO CONFIGURATION TREE	2016-Sep-02	D.C.
16.0	M BOYER	03117	MAKE REFERENCE TO WALL RIB IN BASE NOT AVAILABLE IN ALL VERSIONS	2017-Dec-14	D.C.
16.1	M BOYER		INCLUDE SUPPORT RIB, FORMAT DRAWING, AND INCLUDE -C CONFIG	2023-Nov-08	D.C.
16.2	M BOYER	00523	REMOVE -C BUT LEAVE ONLY -62C VERSION	2024-Apr-08	



NOTES: UNLESS OTHERWISE SPECIFIED

- CORNERS DRAWN SHARP TO BE R.005 MAXIMUM.
- EXTERIOR SURFACE TEXTURE TO BE LIGHT EDM FINISH (EQUIVALENT TO MT-11010). TEXTURE ON ENCLOSURE WILL VARY FROM TIME TO TIME AS THE TOOL WEARS AND IT BECOMES NECESSARY TO REAPPLY.
- INTERIOR SURFACE TEXTURE TO BE: NONE.
- ALL INSIDE RADII .010R. UNLESS OTHERWISE SPECIFIED.
- ALL EXTERNAL DIMENSIONS AFFECTED BY THE DRAFT APPLY AT THE LARGE END OF THE FEATURE, AND ALL INTERNAL FEATURES AFFECTED BY THE DRAFT APPLY AT THE SMALL END OF THE FEATURE UNLESS OTHERWISE SPECIFIED.
- ONE DEGREE DRAFT IN THE DIRECTION OF PULL IS PERMISSIBLE UNLESS OTHERWISE SPECIFIED.
- THIS ENCLOSURE IS A PRESS FIT ASSEMBLY. FOR PERMANENT CLOSURE: A DROP OF ADHESIVE OR ULTRASONIC WELDING IS REQUIRED.
- MATERIAL / COLOR: ABS PLASTIC IS STANDARD IN BLACK OR WHITE. CUSTOM MATERIALS AND COLORS ARE AVAILABLE UPON REQUEST FOR QUOTE. ALTERNATE RESINS HAVE DIFFERENT SHRINK RATES, AND WILL EFFECT DIMENSIONS.
- PCB SIZES ARE RECOMMENDATIONS ONLY. FINAL SIZES AND VERIFICATION OF ITS FIT ARE THE SOLE RESPONSIBILITY OF EACH CUSTOMER.
- THE GATE REMNANT FOR THIS ENCLOSURE IS LOCATED IN THIS POSITION TO MINIMIZE THE COSMETIC IMPACT. IT IS HOWEVER VISIBLE AND VARIES IN SIZE / SHAPE. IT IS EASILY REMOVED WITH CLIPPERS. IF YOU WOULD LIKE NEW AGE TO CLIP THIS FOR YOU, PLEASE ASK YOUR SALES REPRESENTATIVE FOR A FREE QUOTE.
- THIS DRAWING IS BASED ON A SOLID MODEL, AND IS FURTHER DEFINED BY THE SOLID MODEL FILE.
- ALLOWABLE FLASH: 0.010 MAX.
- ALL EJECTOR PIN MARKS TO BE WITHIN 0.010" OF FLUSH, PROTRUDING OR BELOW FLUSH.
- "STANDARD VERSION COVER NOT AVAILABLE WITH RIBS. SEE SHEET 4 FOR DETAILS.
- ASSEMBLY POST DIMENSIONS WILL VARY DEPENDING ON THE "PRESS FIT" OF THE ENCLOSURE.
- TRIM GATE WITHIN 0.030" OF FLUSH.

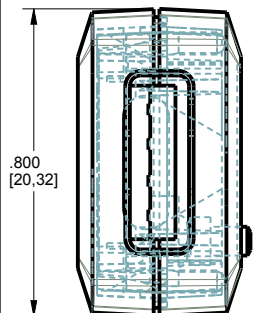
ITEM	FILE NAME	DESCRIPTION	MATERIAL	COLOR	QTY.
6	USB-C_CONNECTOR	SMT USB-C	REFERENCE	CUSTOMER SUPPLIED	1
5	180804_PCB_62	18080462 PCB - REFERENCE	.062" THICK	CUSTOMER SUPPLIED	1
4	180804_PCB_27	180804 PCB - REFERENCE	.027" THICK	CUSTOMER SUPPLIED	1
3	180804_COVER	180804UB COVER - STANDARD	ABS	BLACK or WHITE	1
2	180804_BASE	180804UB BASE - STANDARD	ABS	BLACK or WHITE	1
1	180804_BUTTON	180804 BUTTON	SOLD SEPERATE	--	1

BILL OF MATERIALS

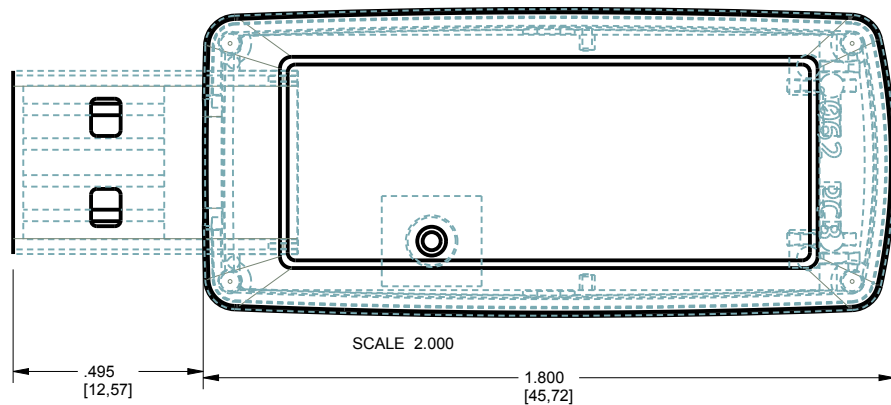
THIRD ANGLE PROJECTION	TOLERANCES: UNLESS OTHERWISE SPECIFIED DIMENSIONS ARE IN U.S. INCHES. X.XX = .015 X.XXXX = .001 X.XXX = .010 X.X" = 1"	NEW AGE ENCLOSURES 2240 South Thornburg Street Santa Maria, CA. 93455 ph. (855) 462-3625 fax (805) 595-1024 www.newageenclosures.com			
DO NOT SCALE DRAWING	Customer's Part No: 180804				
APPROVAL BY DATE CHECK _____ ENG. _____ SCALE AS NOTED		STANDARD - USB DRIVE PXX-180804XX-XXX			
DRAWN BY M BOYER	DATE 2005-May-04		SIZE A	DRAWING NAME 180804X_R16_2	SHEET 1 OF 8

NOTICE: THE INFORMATION AND DATA CONTAINED HEREIN IS CONSIDERED PROPRIETARY TO ALLTEC INTEGRATED MFG INC & SHALL REMAIN THE EXCLUSIVE PROPERTY OF ALLTEC INTEGRATED MFG INC. THE HOLDER WILL ASSUME CUSTODY AND CONTROL THAT THIS DOCUMENT WILL NOT BE COPIED, REPRODUCED, OR DISCLOSED WITHOUT THE EXPRESS WRITTEN CONSENT OF ALLTEC INTEGRATED MFG INC. NOT CONSTITUTE A GRANT TO MANUFACTURE ANY ITEMS.
© 2024

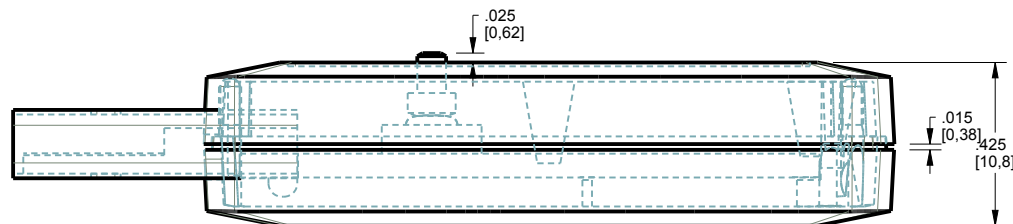
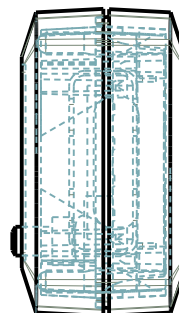
180804 ASSEMBLY



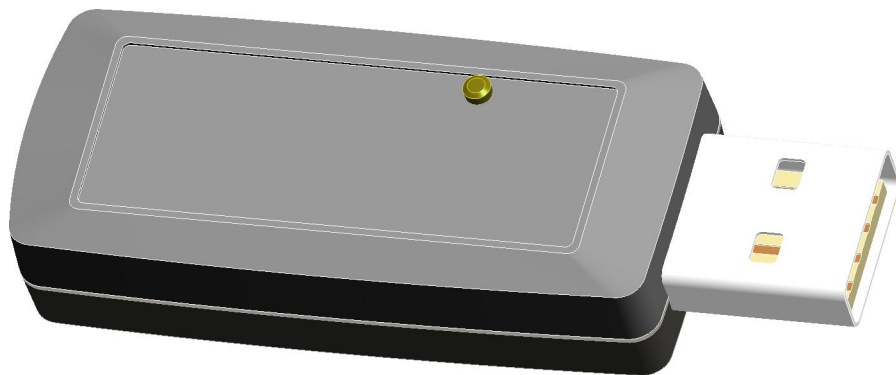
.477
[12.12]



SCALE 2.000



.015
[0.38]
.425
[10.8]



SCALE 2.000

TOLERANCES: UNLESS OTHERWISE SPECIFIED
DIMENSIONS ARE IN U.S. INCHES.
X.XX = .015 X.XXXX = .001
X.XXX = .010 X.X° = 1°

NEW AGE ENCLOSURES
Customer's Part No: 180804

APPROVAL	BY	DATE
CHECK		
ENG.		
SCALE	AS NOTED	

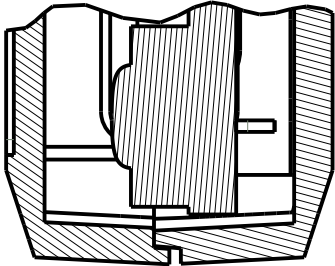
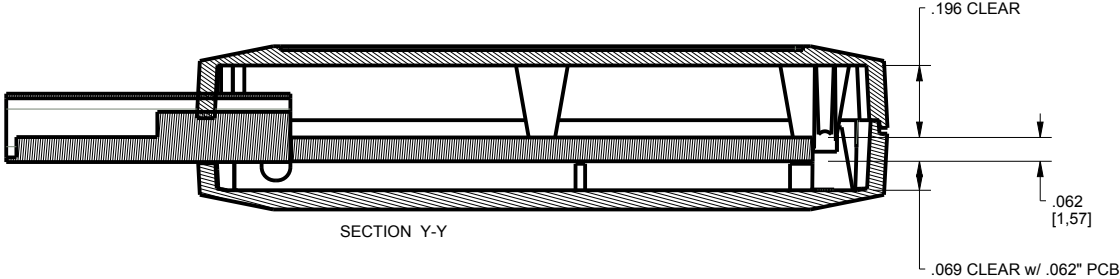
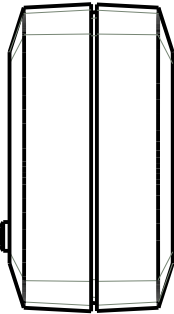
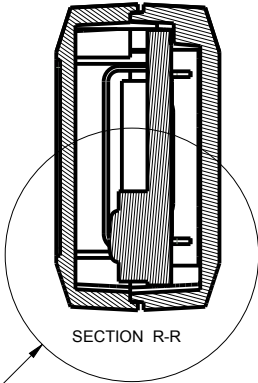
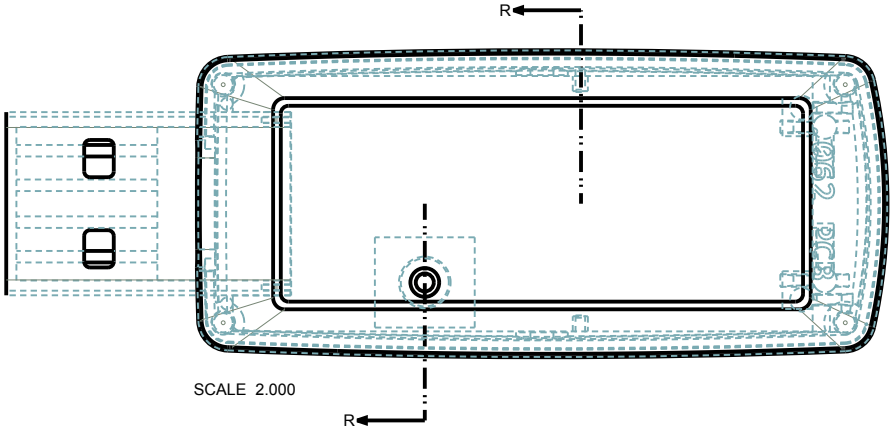
DRAWN BY	2005-May-04
M BOYER	

NEW AGE ENCLOSURES
2240 South Thornburg Street Santa Maria, CA. 93455
ph. (855) 462-3625 fax (805) 595-1024
www.newageenclosures.com

**STANDARD - USB DRIVE
PXX-180804XX-XXX**

SIZE	DRAWING NAME	SHEET	REV.DOC
A	180804X_R16_2	2 OF 8	16.2

180804 ASSEMBLY



TOLERANCES: UNLESS OTHERWISE SPECIFIED
DIMENSIONS ARE IN U.S. INCHES.
X.XX = .015 X.XXXX = .001
X.XXX = .010 X.X° = 1°

NEW AGE ENCLOSURES
2240 South Thornburg Street Santa Maria, CA. 93455
ph. (855) 462-3625 fax (805) 595-1024

Customer's Part No: 180804

www.newageenclosures.com

APPROVAL	BY	DATE
CHECK		
ENG.		
SCALE	AS NOTED	

**STANDARD - USB DRIVE
PXX-180804XX-XXX**

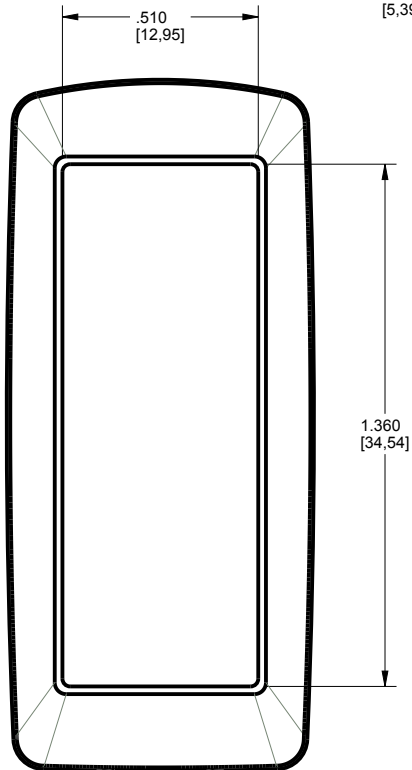
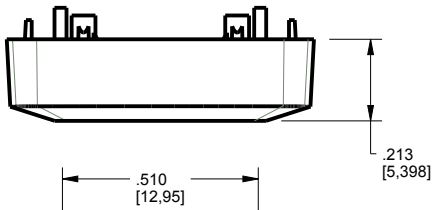
DRAWN BY
M BOYER 2005-May-04

SIZE
A 180804X_R16_2

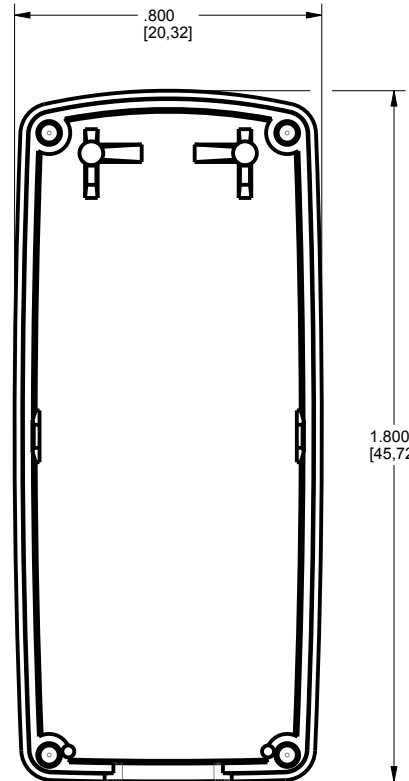
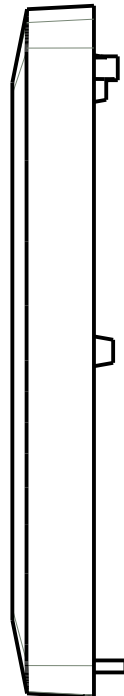
SHEET
3 OF 8

REV.DOC
16.2

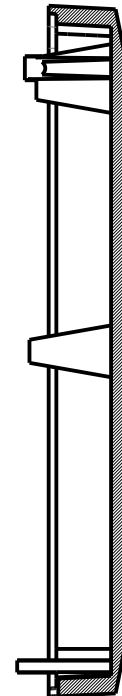
180804 COVER



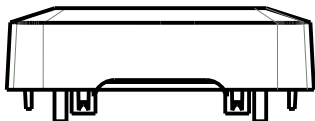
SCALE 2.000



SECTION Y-Y



SCALE 2.000



TOLERANCES: UNLESS OTHERWISE SPECIFIED
DIMENSIONS ARE IN U.S. INCHES.
X.XX = .015 X.XXXX = .001
X.XXX = .010 X.X° = 1°

NEW AGE ENCLOSURES

Customer's Part No: 180804

APPROVAL	BY	DATE
CHECK		
ENG.		
SCALE	AS NOTED	

DRAWN BY
M BOYER 2005-May-04

NEW AGE ENCLOSURES
2240 South Thornburg Street Santa Maria, CA. 93455
ph. (855) 462-3625 fax (805) 595-1024

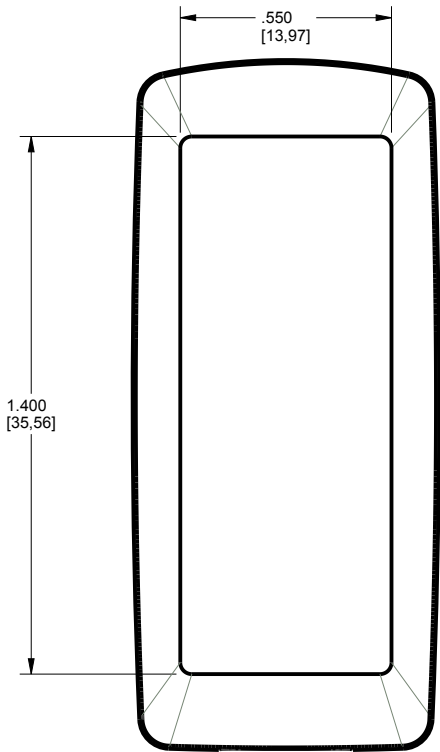
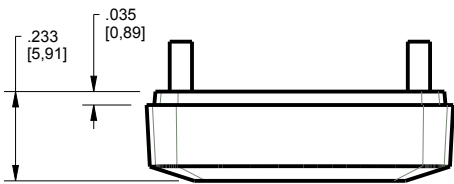
www.newageenclosures.com

STANDARD - USB DRIVE
PXX-180804XX-XXX

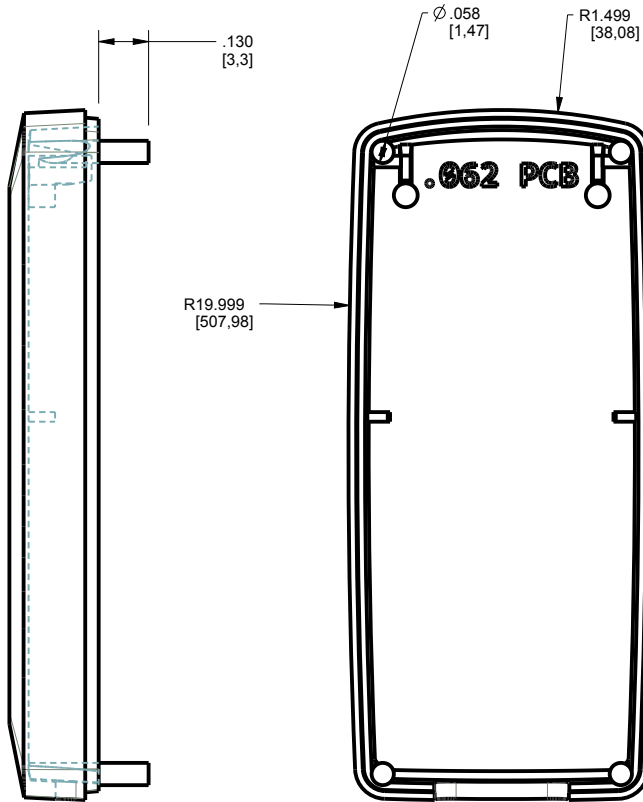
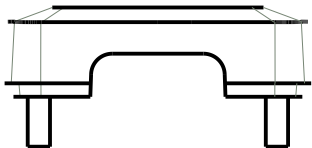
SIZE A DRAWING NAME
180804X_R16_2

SHEET 4 OF 8 REV.DOC 16.2

180804 BASE



SCALE 2.000



SCALE 2.000

TOLERANCES: UNLESS OTHERWISE SPECIFIED
DIMENSIONS ARE IN U.S. INCHES.
X.XX = .015 X.XXXX = .001
X.XXX = .010 X.X' = 1°

NEW AGE ENCLOSURES
2240 South Thornburg Street Santa Maria, CA. 93455
ph. (855) 462-3625 fax (805) 595-1024

Customer's Part No: 180804

www.newageenclosures.com

APPROVAL	BY	DATE
CHECK		
ENG.		
SCALE	AS NOTED	

**STANDARD - USB DRIVE
PXX-180804XX-XXX**

DRAWN BY
M BOYER 2005-May-04

SIZE A DRAWING NAME
180804X_R16_2

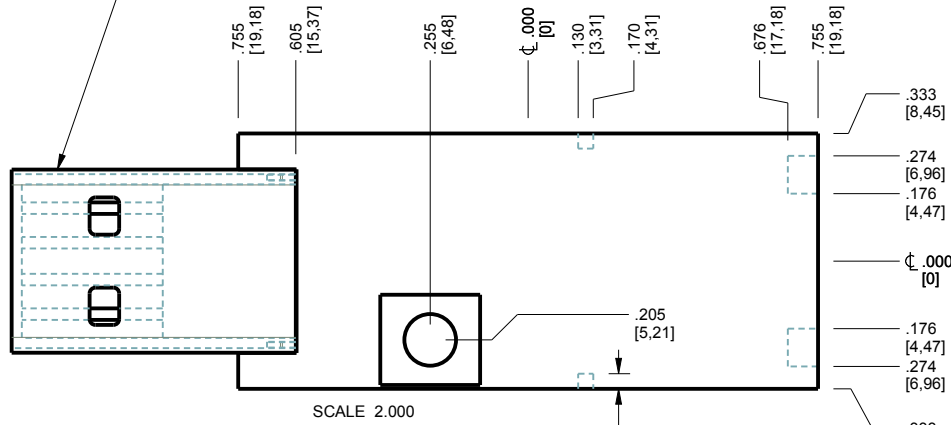
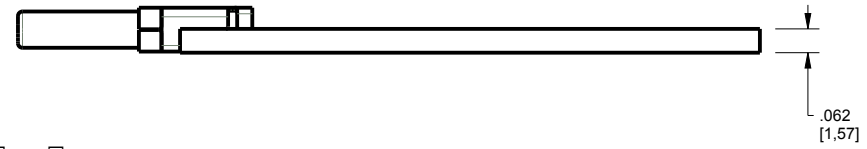
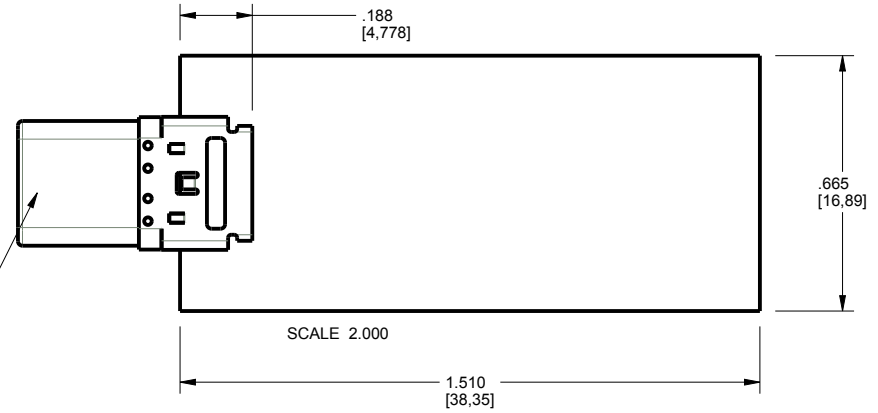
SHEET 5 OF 8 REV.DOC 16.2

180804 PCB - CUSTOMER SUPPLIED

PCB SIZES ARE RECOMMENDATIONS ONLY. FINAL SIZES AND VERIFICATION OF ITS FIT ARE THE SOLE RESPONSIBILITY OF THE OEM.

SUGGESTED (Reference)
 USB 3.2 Gen2 TYPE C PLUG CONNECTOR, HORIZONTAL, SMT
 GLOBAL CONNECTOR TECHNOLOGY, LTD
 www.gtc.co PN. USB4155

SUGGESTED (Reference)
 TYPE A USB PLUG CONNECTOR
 ACON, ADVANCED CONNEXTEK INC.
 PN. C-UAR70-00-00
 www.acon/en-global/product/detail/378

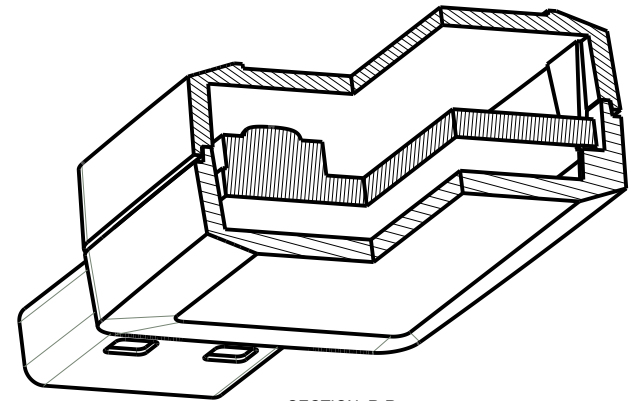
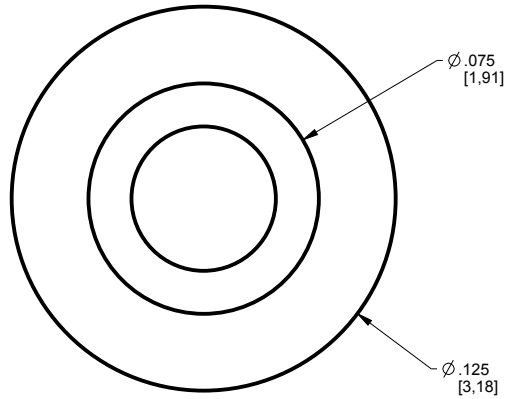


"STANDARD" 180804-S CONFIGURATION
 CAN ACCOMODATE 0.027" TO 0.031" PCB.
 OR
 180804-62 CONFIGURATION
 CAN ACCOMODATE 0.062" PCB.

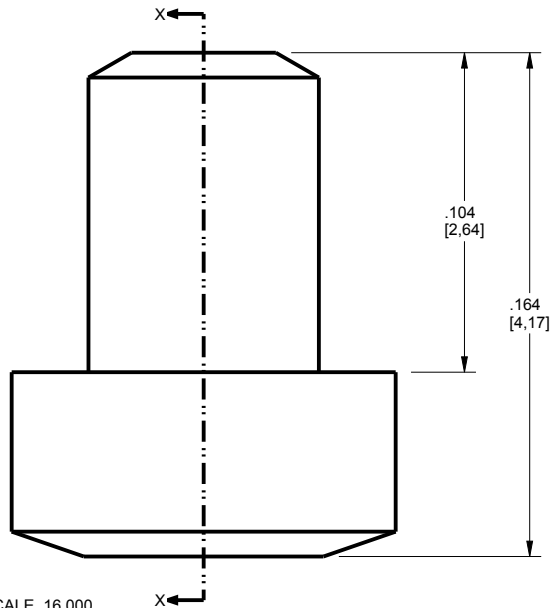
TOLERANCES: UNLESS OTHERWISE SPECIFIED DIMENSIONS ARE IN U.S. INCHES. X.XX = .015 X.XXXX = .001 X.XXX = .010 X.XX° = 1°		NEW AGE ENCLOSURES	
NEW AGE ENCLOSURES		2240 South Thornburg Street Santa Maria, CA. 93455 ph. (855) 462-3625 fax (805) 595-1024 www.newageenclosures.com	
Customer's Part No: 180804			
APPROVAL	BY	DATE	
CHECK			
ENG.			
SCALE	AS NOTED		
DRAWN BY	SIZE	DRAWING NAME	SHEET
M BOYER	2005-May-04	A 180804X_R16_2	6 OF 8
			REV.DOC
			16.2

**STANDARD - USB DRIVE
 PXX-180804XX-XXX**

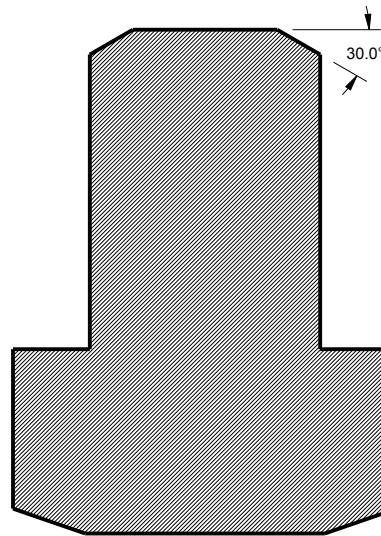
OPTIONAL 180804 BUTTON



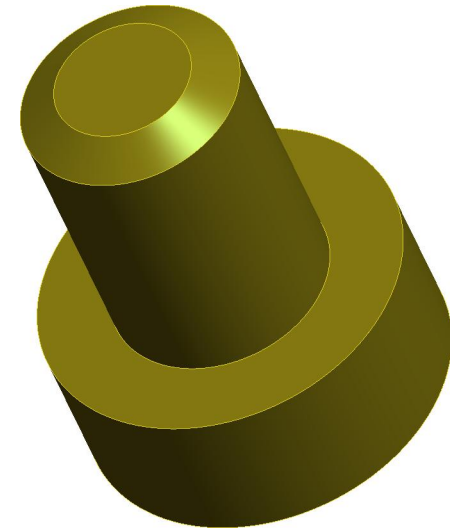
SECTION R-R
SCALE 2.500



SCALE 16.000



SECTION X-X



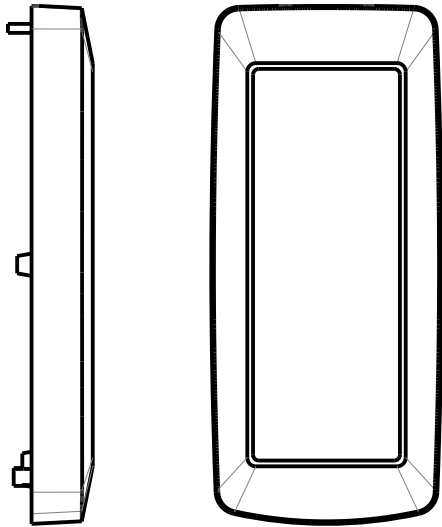
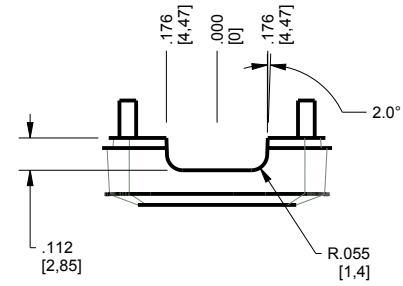
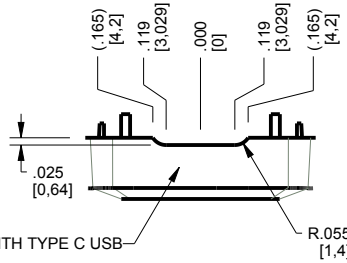
SCALE 16.000

TOLERANCES: UNLESS OTHERWISE SPECIFIED DIMENSIONS ARE IN U.S. INCHES. X.XX = .015 X.XXXX = .001 X.XXX = .010 X.X° = 1°		NEW AGE ENCLOSURES	
NEW AGE ENCLOSURES		2240 South Thornburg Street Santa Maria, CA. 93455 ph. (855) 462-3625 fax (805) 595-1024 www.newageenclosures.com	
Customer's Part No: 180804			
APPROVAL	BY	DATE	
CHECK			
ENG.			
SCALE	AS NOTED		
DRAWN BY	SIZE	DRAWING NAME	SHEET
M BOYER	2005-May-04	A 180804X_R16_2	7 OF 8
			REV.DOC
			16.2

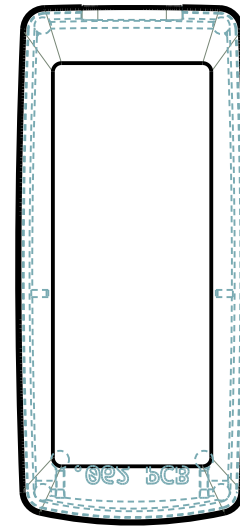
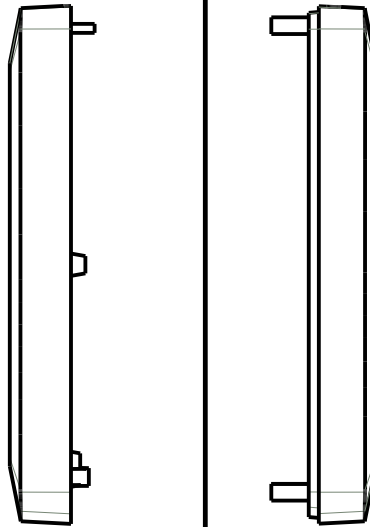
STANDARD - USB DRIVE
PXX-180804XX-XXX

180804 2nd OPERATION - SHEET 1 of 1

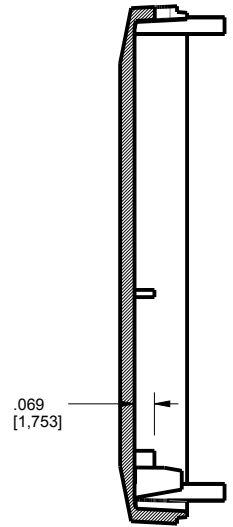
NEW AGE ENCLOSURES DELIVERS OUR OFF THE SHELF ENCLOSURES MARKET-READY TO YOUR SPECIFICATIONS WITH IN-HOUSE CNC MACHINING AND PART PRINTING. ALL SURFACES AND INTERNAL AREAS ARE AVAILABLE FOR CNC ALTERATIONS. THE INSIDE RADIUS OF MACHINED FEATURES CAN BE NO SMALLER THAN .031" AND PART DECORATING POSSIBILITIES ARE ENDLESS WITH OUR PAD-PRINTING AND DIRECT-TO-PART CAPABILITIES. REACH A NAE REPRESENTATIVE AT 855-4NA-ENCL FOR ALL OPTIONS, PRICING, AND SCHEDULING.



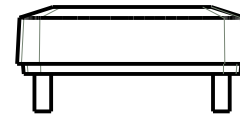
180804U COVER
SCALE 1.500



180804U BASE
SCALE 1.500



SECTION Y-Y



TOLERANCES: UNLESS OTHERWISE SPECIFIED
DIMENSIONS ARE IN U.S. INCHES.
X.XX = .015 X.XXXX = .001
X.XXX = .010 X.X° = 1°

Customer's Part No: 180804

NEW AGE ENCLOSURES
2240 South Thornburg Street Santa Maria, CA. 93455
ph. (855) 462-3625 fax (805) 595-1024
www.newageenclosures.com

PXX-180804X-XXX COVER - ABS, BLACK or WHITE					
STEP NO	DESCRIPTION	CUTTER	FIXTURE	ORIENTATION	PROGRAM
1-C-C1	-	T2 = .062" EM	100	-	o1001
2-C-C2	-	T2 = .062" EM	100	-	o1002

APPROVAL	BY	DATE
CHECK		
ENG.		
SCALE	AS NOTED	
DRAWN BY	M BOYER	
	2005-May-04	

STANDARD - USB DRIVE PXX-180804XX-XXX		SHEET	REV.DOC
SIZE	DRAWING NAME	8 OF 8	16.2
A	180804X_R16_2		