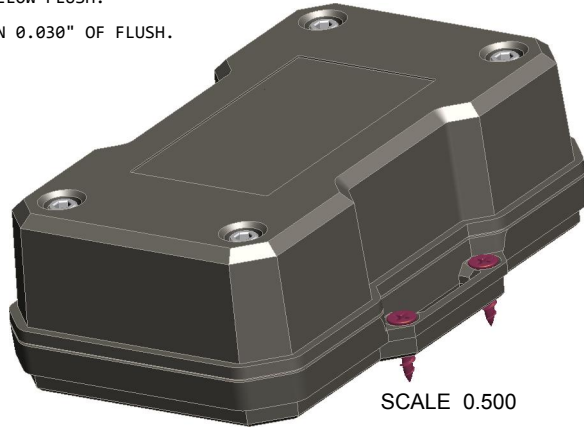
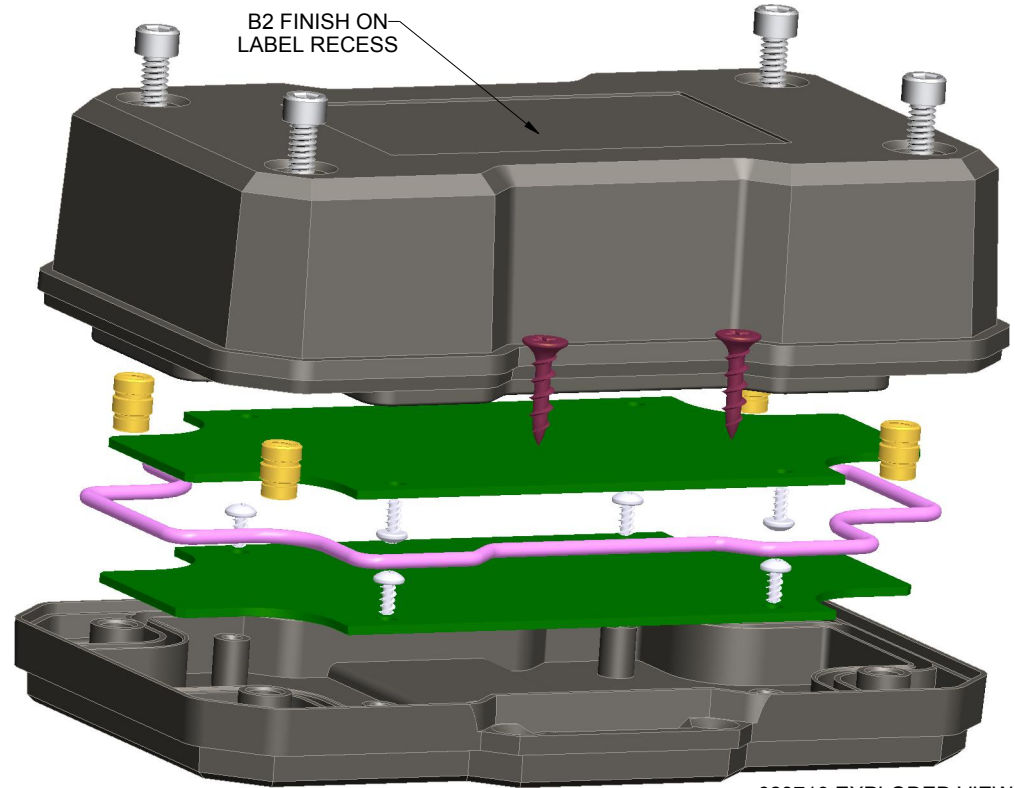


NOTES: UNLESS OTHERWISE SPECIFIED

- CORNERS DRAWN SHARP TO BE R.005 MAXIMUM.
- EXTERIOR SURFACE TEXTURE TO BE LIGHT EDM FINISH EQUIVALENT TO MT-11020, EXCEPT WHERE NOTED. INTERIOR TEXTURE WILL BE B2 OR DRAW POLISH. TEXTURE ON ENCLOSURE WILL VARY FROM TIME TO TIME AS THE TOOL WEARS AND IT BECOMES NECESSARY TO REAPPLY.
- INTERIOR SURFACE TEXTURE TO BE: NONE.
- ALL INSIDE RADII .010R. UNLESS OTHERWISE SPECIFIED.
- ALL EXTERNAL DIMENSIONS AFFECTED BY THE DRAFT APPLY AT THE LARGE END OF THE FEATURE, AND ALL INTERNAL FEATURES AFFECTED BY THE DRAFT APPLY AT THE SMALL END OF THE FEATURE UNLESS OTHERWISE SPECIFIED.
- ONE DEGREE DRAFT IN THE DIRECTION OF PULL IS PERMISSIBLE UNLESS OTHERWISE SPECIFIED.
- MATERIAL / COLOR: ENCLOSURE IN ASA PLASTIC IS STANDARD IN BLACK OR GREY. SLIGHT COSMETIC SWIRLING, BLUSHING, AND/OR DISCOLORIZATION CAN OCCUR IN THIS ENCLOSURE DUE TO UV INHIBITORS IN THE RESIN. O-RING IN TPE IS STANDARD IN BLUE. CUSTOM MATERIALS AND COLORS ARE AVAILABLE UPON REQUEST FOR QUOTE.
- PCB SIZES ARE RECOMMENDATIONS ONLY. FINAL SIZES AND VERIFICATION OF ITS FIT ARE THE SOLE RESPONSIBILITY OF EACH CUSTOMER.
- ASSEMBLY SCREWS FOR THE ENCLOSURE INCLUDED. MOUNTING SCREWS FOR THE PCB ARE SOLD SEPARATELY.
- THIS DRAWING IS BASED ON A SOLID MODEL, AND IS FURTHER DEFINED BY THE SOLID MODEL FILE.
- ALLOWABLE FLASH: 0.010 MAX.
- ALL EJECTOR PIN MARKS TO BE WITHIN 0.010" OF FLUSH, PROTRUDING OR BELOW FLUSH.
- TRIM GATE WITHIN 0.030" OF FLUSH.



| R E V I S I O N |          |         |  |             |         |
|-----------------|----------|---------|--|-------------|---------|
| REV.            | DRAWN BY | ECO No  | DESCRIPTION                                  | DATE        | APPROVE |
| A               | M BOYER  | DR 1807 | PRELIMINARY RELEASE                          | 2018-Jul-12 | D.C.    |
| B               | M BOYER  |         | MOVE EARS FROM THE ENDS TO THE SIDES         | 2019-Jul-09 | J.T.    |
| C               | M BOYER  |         | UPDATE BOM                                   | 2019-Sep-05 | J.T.    |
| D               | M BOYER  |         | DESIGN REVIEW Jan 13, 2020                   | 2020-Jan-14 | J.T.    |
| E               | M BOYER  |         | REVIEW Feb 22, 2021                          | 2021-Feb-23 | J.T.    |
| F               | M BOYER  |         | INCLUDE WEEP HOLES                           | 2021-Mar-10 | J.T.    |
| G               | M BOYER  |         | ADJUST LABEL RECESS                          | 2021-Mar-26 | J.T.    |
| H               | M BOYER  |         | READJUST LABEL RECESS PER Apr 13 REVIEW      | 2021-Apr-13 | J.T.    |
| I               | M BOYER  |         | FINALIZE PRINT FOR DIR                       | 2021-Nov-03 | J.T.    |
| 1.0             | M BOYER  | 00623   | UPDATE TO AS BUILT AND RELEASE TO PRODUCTION | 2023-Jan-24 |         |



| ITEM | FILE NAME            | DESCRIPTION               | MATERIAL       | COLOR             | QTY. |
|------|----------------------|---------------------------|----------------|-------------------|------|
| 8    | SHCS_10-24           | S.H.C.S. 10-24 UNC X1.1/2 | STEEL          | INCLUDED          | 4    |
| 7    | 623719_ORING         | OR-161 ORING - STANDARD   | SHORE A        | INCLUDED          | 4    |
| 6    | SCREW_HILO-N04       | #4 HiLo SCREW x .250"     | ZINC PLATED    | CUSTOMER SUPPLIED | 8    |
| 5    | SCREW-DRYWALLX750    | DRYWALL SCREW             | REFERENCE ONLY | CUSTOMER SUPPLIED | 4    |
| 4    | 623719_PCB           | 623719 PCB - REFERENCE    | .062" THICK    | CUSTOMER SUPPLIED | 2    |
| 3    | 623719_COVER         | 623719 COVER              | ASA            | BLACK or GREY     | 1    |
| 2    | 623719_BASE          | 623719 BASE               | ASA            | BLACK or GREY     | 1    |
| 1    | TRISTAR_10-24_INSERT | PEM INSERT 10-24          | BRASS          | 10-24 x .250      | 4    |

BILL OF MATERIALS

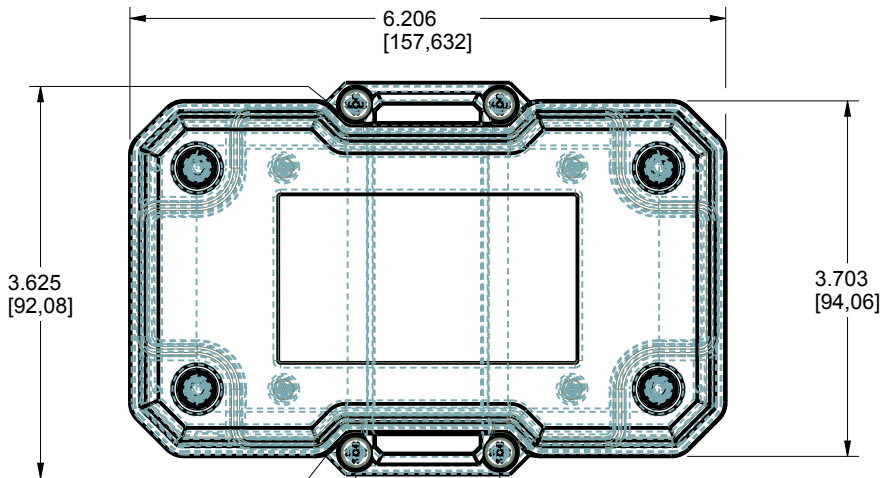
|                            |  |
|----------------------------|--|
| THIRD ANGLE PROJECTION     | TOLERANCES: UNLESS OTHERWISE SPECIFIED DIMENSIONS ARE IN U.S. INCHES.<br>X.XX = .015 X.XXXX = .001<br>X.XXX = .010 X.X" = 1" |
| DO NOT SCALE DRAWING       | NEW AGE ENCLOSURES   |
| Customer's Part No: 623719 |  |
| APPROVAL                   | BY DATE  |
| CHECK                      |  |
| ENG.                       |  |
| SCALE                      | AS NOTED   |
| DRAWN BY                   | 2018-Jul-12  |
| M BOYER                    |  |

**NEW AGE ENCLOSURES**  
 2240 South Thornburg Street Santa Maria, CA. 93455  
 ph. (805) 595-1310 fax (805) 595-1024  
[www.newageenclosures.com](http://www.newageenclosures.com)

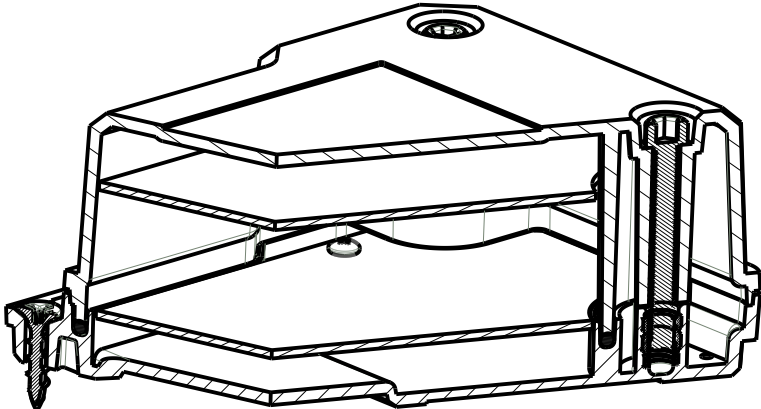
**LARGE RUGGED UTILITY - STANDARD**  
**SXX-623719-XXX**

|      |              |        |         |
|------|--------------|--------|---------|
| SIZE | DRAWING NAME | SHEET  | REV.DOC |
| A    | 623719_R1_0  | 1 OF 6 | 1.0     |

623719 ASSEMBLY



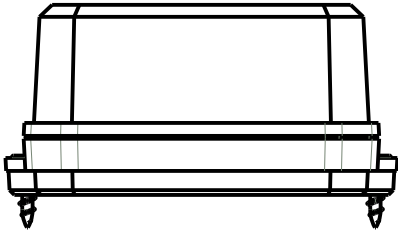
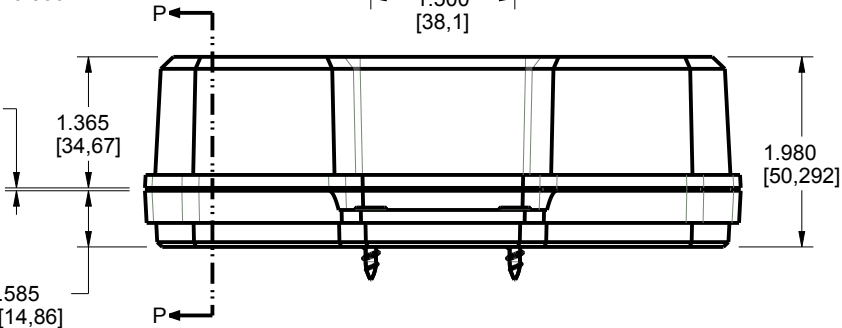
SCALE 0.500



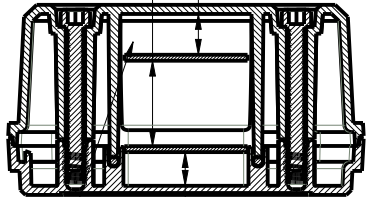
SECTION B-B  
SCALE 0.750

.890 CLEAR [22,61]

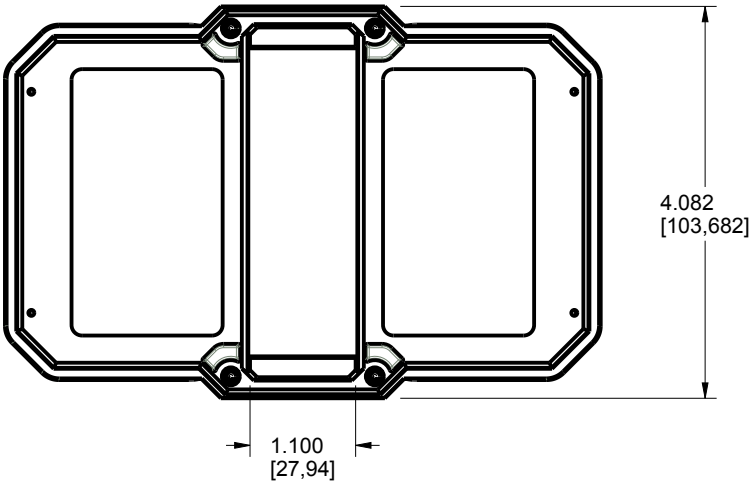
.425 CLEAR [10,8]



THIS ENCLOSURE CAN ACCOMMODATE  
ONE OR TWO IDENTICAL  
PROFILE PCB



SECTION P-P



TOLERANCES: UNLESS OTHERWISE SPECIFIED  
DIMENSIONS ARE IN U.S. INCHES.  
X.XX = .015 X.XXXX = .001  
X.XXX = .010 X.X° = 1°

**NEW AGE ENCLOSURES**  
2240 South Thornburg Street Santa Maria, CA. 93455  
ph. (805) 595-1310 fax (805) 595-1024

Customer's Part No: 623719

www.newageenclosures.com

|          |          |      |
|----------|----------|------|
| APPROVAL | BY       | DATE |
| CHECK    |          |      |
| ENG.     |          |      |
| SCALE    | AS NOTED |      |

LARGE RUGGED UTILITY - STANDARD  
SXX-623719-XXX

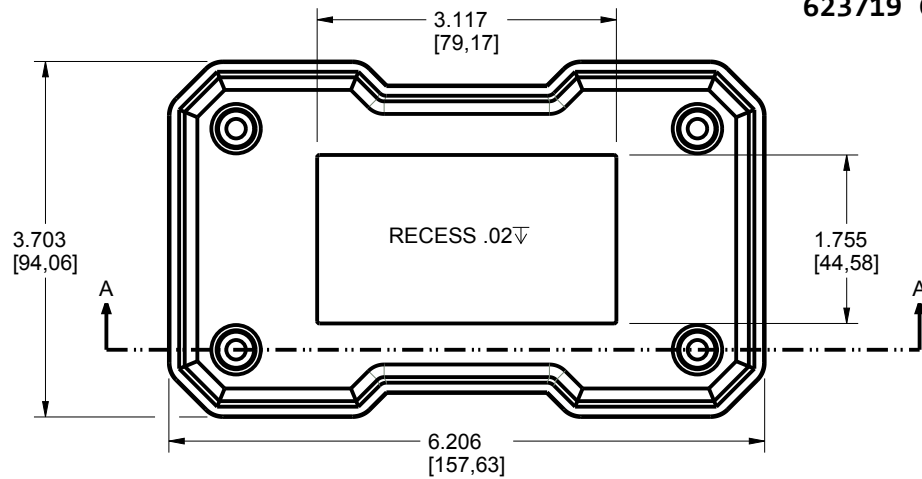
DRAWN BY  
M BOYER 2018-Jul-12

SIZE  
A 623719\_R1\_0

SHEET  
2 OF 6

REV.DOC  
1.0

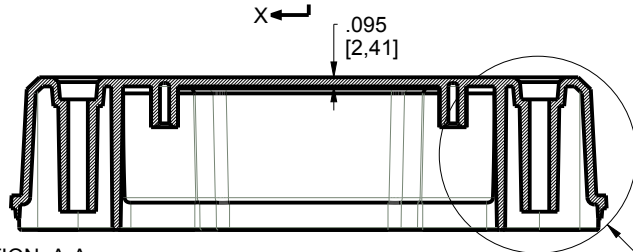
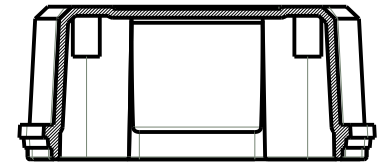
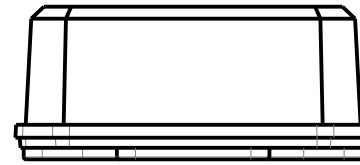
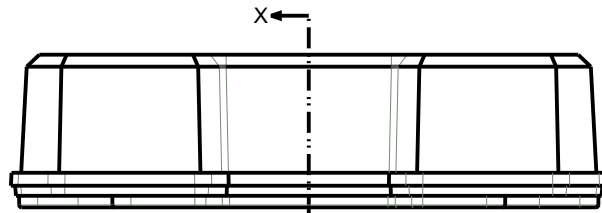
623719 COVER



SCALE 0.500

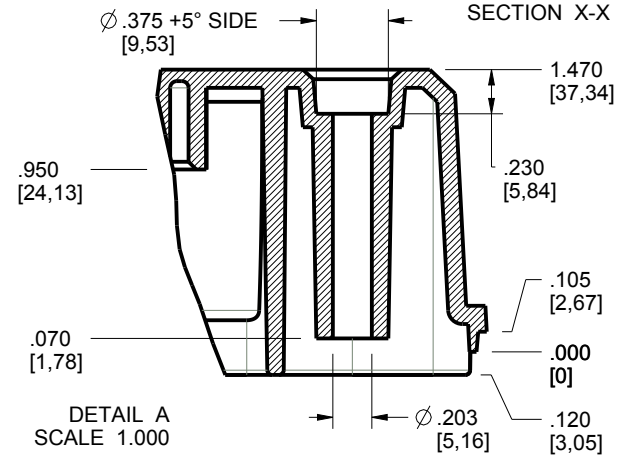
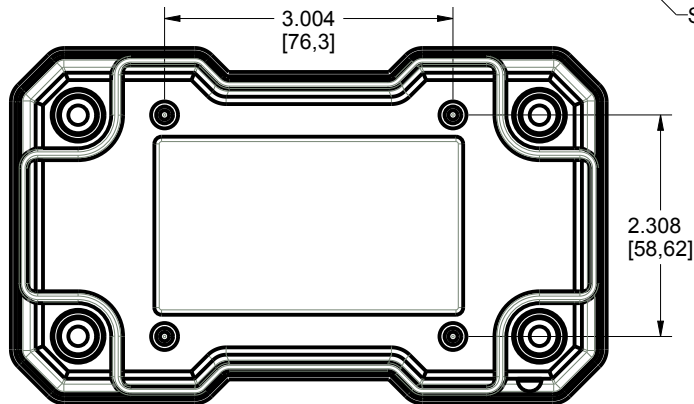


SCALE 0.500



SECTION A-A

SEE DETAIL A



DETAIL A  
SCALE 1.000

TOLERANCES: UNLESS OTHERWISE SPECIFIED  
DIMENSIONS ARE IN U.S. INCHES.  
X.XX = .015 X.XXXX = .001  
X.XXX = .010 X.X° = 1°

NEW AGE ENCLOSURES  
Customer's Part No: 623719

|          |          |      |
|----------|----------|------|
| APPROVAL | BY       | DATE |
| CHECK    |          |      |
| ENG.     |          |      |
| SCALE    | AS NOTED |      |

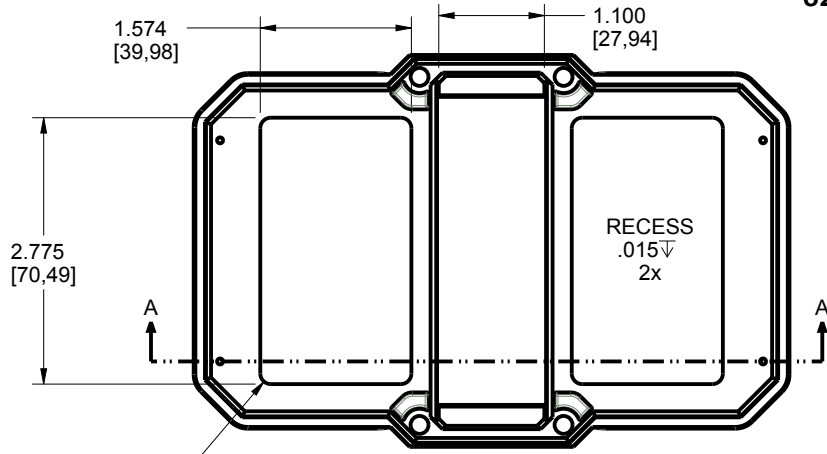
DRAWN BY  
M BOYER  
2018-Jul-12

**NEW AGE ENCLOSURES**  
2240 South Thornburg Street Santa Maria, CA. 93455  
ph. (805) 595-1310 fax (805) 595-1024  
www.newageenclosures.com

LARGE RUGGED UTILITY - STANDARD  
SXX-623719-XXX

|           |                             |                 |                |
|-----------|-----------------------------|-----------------|----------------|
| SIZE<br>A | DRAWING NAME<br>623719_R1_0 | SHEET<br>3 OF 6 | REV.DOC<br>1.0 |
|-----------|-----------------------------|-----------------|----------------|

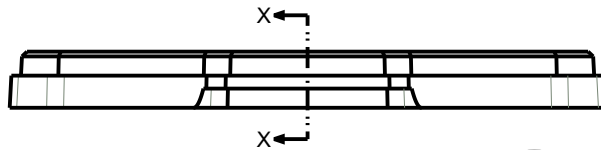
**623719 BASE**



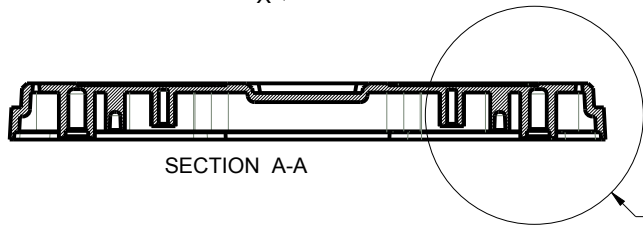
SCALE 0.500



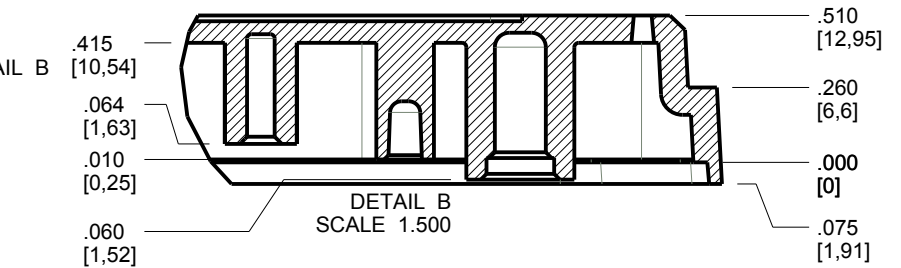
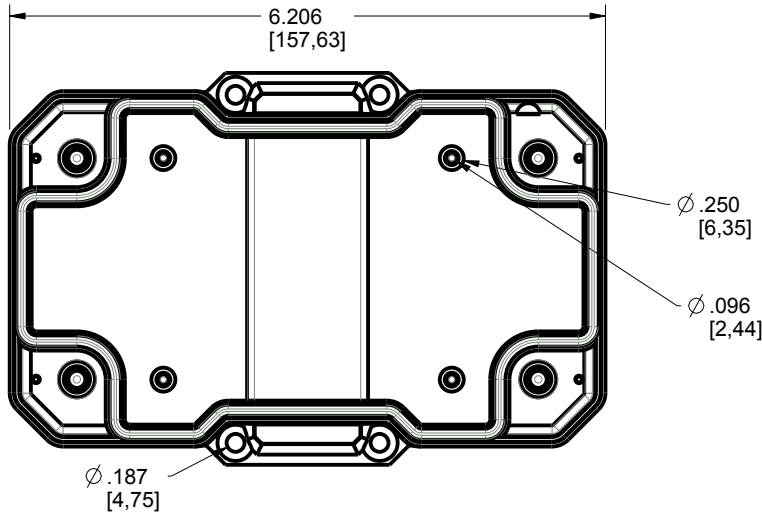
SCALE 0.500



SECTION X-X



SECTION A-A



DETAIL B  
SCALE 1.500

TOLERANCES: UNLESS OTHERWISE SPECIFIED  
DIMENSIONS ARE IN U.S. INCHES.  
X.XX = .015 X.XXXX = .001  
X.XXX = .010 X.X° = 1°

NEW AGE ENCLOSURES

Customer's Part No: 623719

|          |          |      |
|----------|----------|------|
| APPROVAL | BY       | DATE |
| CHECK    |          |      |
| ENG.     |          |      |
| SCALE    | AS NOTED |      |

DRAWN BY  
M BOYER

2018-Jul-12

**NEW AGE ENCLOSURES**

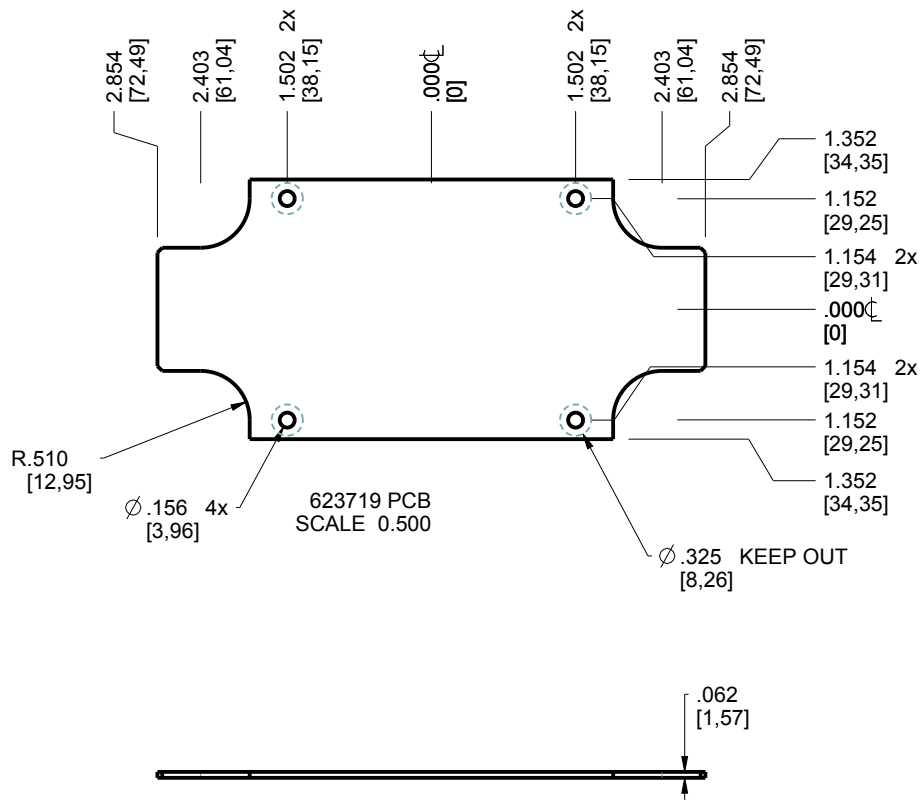
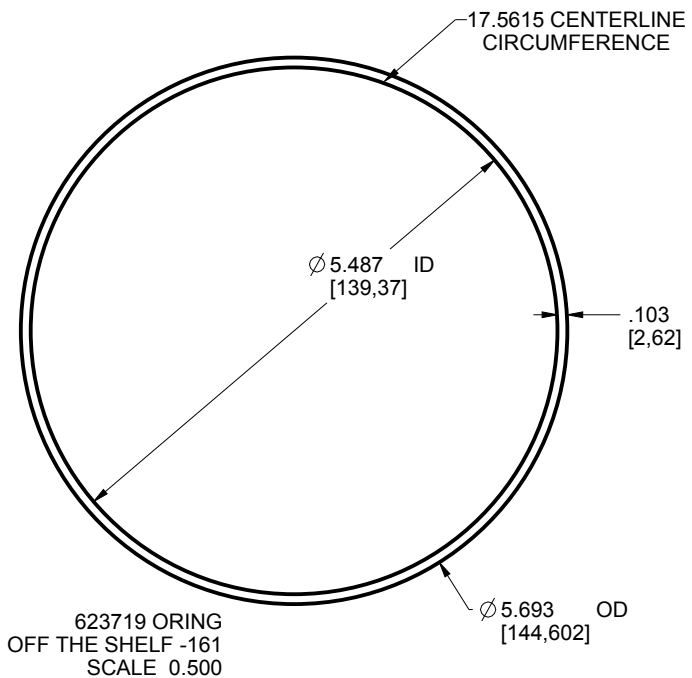
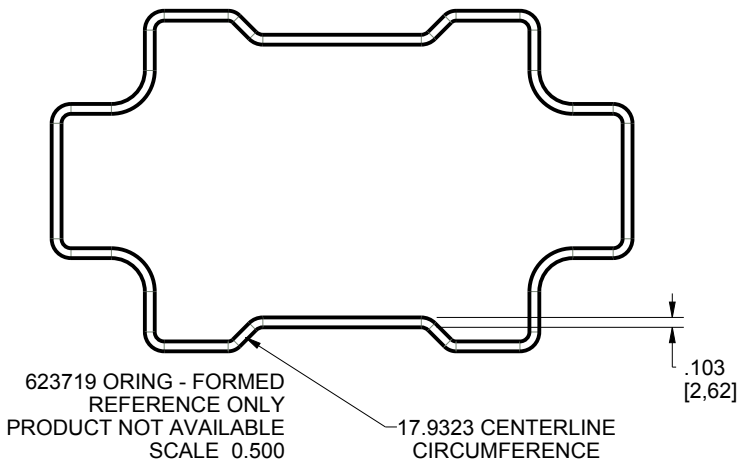
2240 South Thornburg Street Santa Maria, CA. 93455  
ph. (805) 595-1310 fax (805) 595-1024  
www.newageenclosures.com

LARGE RUGGED UTILITY - STANDARD  
SXX-623719-XXX

|           |                             |                 |                |
|-----------|-----------------------------|-----------------|----------------|
| SIZE<br>A | DRAWING NAME<br>623719_R1_0 | SHEET<br>4 OF 6 | REV.DOC<br>1.0 |
|-----------|-----------------------------|-----------------|----------------|

**623719 PCB - CUSTOMER SUPPLIED**

PCB SIZES ARE RECOMMENDATIONS ONLY. FINAL SIZES AND VERIFICATION OF ITS FIT ARE THE SOLE RESPONSIBILITY OF THE OEM.



TOLERANCES: UNLESS OTHERWISE SPECIFIED DIMENSIONS ARE IN U.S. INCHES.  
X.XX = .015 X.XXXX = .001  
X.XXX = .010 X.X° = 1°

NEW AGE ENCLOSURES

Customer's Part No: 623719

APPROVAL BY DATE

CHECK

ENG.

SCALE AS NOTED

DRAWN BY M BOYER

2018-Jul-12

**NEW AGE ENCLOSURES**

2240 South Thornburg Street Santa Maria, CA. 93455  
ph. (805) 595-1310 fax (805) 595-1024

www.newageenclosures.com

LARGE RUGGED UTILITY - STANDARD  
SXX-623719-XXX

SIZE A

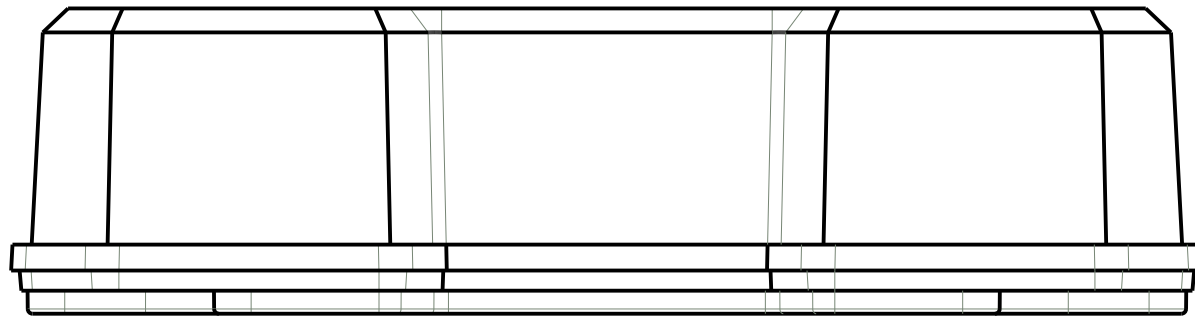
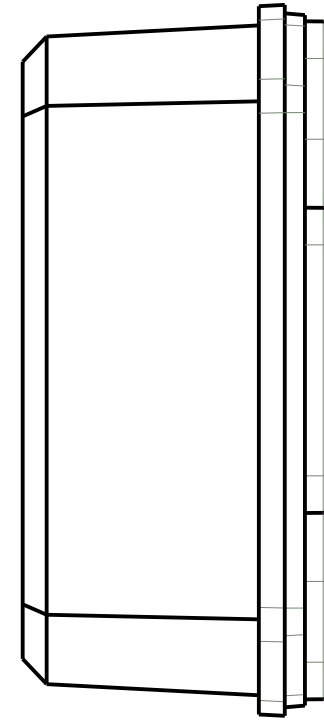
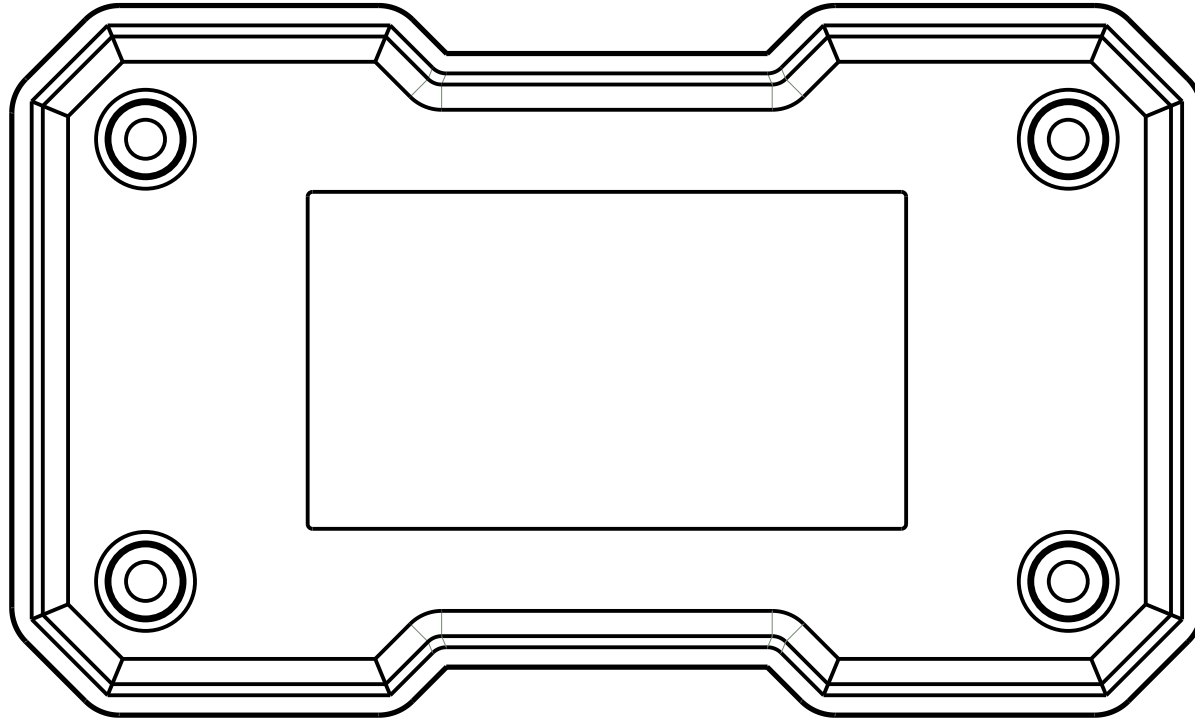
DRAWING NAME 623719\_R1\_0

SHEET 5 OF 6

REV.DOC 1.0

### 623719 - 2nd OPERATION DETAILS

NEW AGE ENCLOSURES DELIVERS YOUR ENCLOSURE MARKET-READY WITH IN-HOUSE  
CNC MACHINING, PAD PRINTING, ASSEMBLY, AND FULFILLMENT.  
ALL SURFACES AND AREAS ARE AVAILABLE FOR CNC ALTERATION BY NEW AGE ENCLOSURES  
CALL (805) 595-1310 FOR PRICING AND SCHEDULE.  
THE INSIDE RADIUS OF ANY MACHINED FEATURES SHOULD BE NO SMALLER THAN .031"



SCALE 1.000

TOLERANCES: UNLESS OTHERWISE SPECIFIED  
DIMENSIONS ARE IN U.S. INCHES.  
X.XX = .015 X.XXXX = .001  
X.XXX = .010 XX° = 1°

NEW AGE ENCLOSURES

Customer's Part No: 623719

**NEW AGE ENCLOSURES**

2240 South Thornburg Street Santa Maria, CA. 93455  
ph. (805) 595-1310 fax (805) 595-1024

www.newageenclosures.com

LARGE RUGGED UTILITY - STANDARD  
SXX-623719-XXX

| SXX-623719-XXX COVER - ASA, BLACK |             |               |         |             |         |
|-----------------------------------|-------------|---------------|---------|-------------|---------|
| STEP                              | DESCRIPTION | CUTTER        | FIXTURE | ORIENTATION | PROGRAM |
| 1-C-C1                            | -           | T2 = .062" EM | -       | -           | o1001   |
| 2-C-C2                            | -           | T2 = .062" EM | -       | -           | o1002   |

|          |             |      |
|----------|-------------|------|
| APPROVAL | BY          | DATE |
| CHECK    |             |      |
| ENG.     |             |      |
| SCALE    | AS NOTED    |      |
| DRAWN BY |             |      |
| M BOYER  | 2018-Jul-12 |      |

|      |              |        |         |
|------|--------------|--------|---------|
| SIZE | DRAWING NAME | SHEET  | REV.DOC |
| A    | 623719_R1_0  | 6 OF 6 | 1.0     |