

# From Off-The-Shelf to Market-Ready© New Age Enclosures is your Single Source Solution.



**Get a free quote today.**

Visit [newageenclosures.com/services](http://newageenclosures.com/services) or  
call 855-4NA-ENCL for customization.

Part Marking  
CNC Cutouts  
Color Options  
RF/EMI Shielding  
Specialized Materials  
Custom Designed Enclosures

**NEW AGE  
ENCLOSURES**

DEVELOP THE FUTURE

**20+** YEARS  
of LEADING BY DESIGN

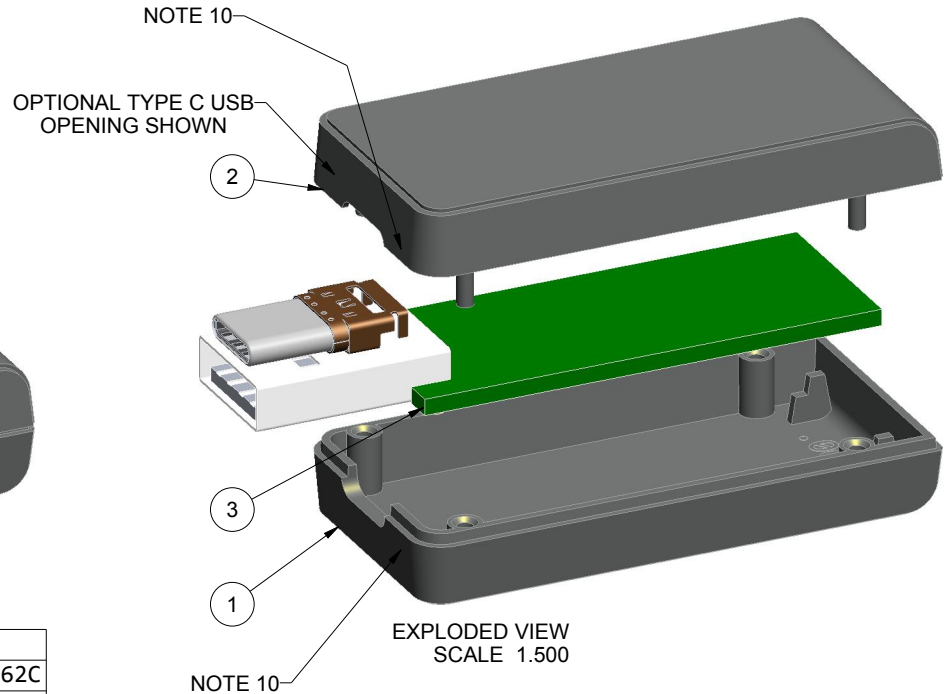


**NOTES: UNLESS OTHERWISE SPECIFIED**

1. CORNERS DRAWN SHARP TO BE R.005 MAXIMUM.
2. EXTERIOR SURFACE TEXTURE TO BE LIGHT EDM FINISH. EQUIVELANT TO MT-11010.
3. INTERIOR SURFACE TEXTURE: NONE
4. ALL INSIDE RADII .010R. UNLESS OTHERWISE SPECIFIED.
5. ALL EXTERNAL DIMENSIONS AFFECTED BY THE DRAFT APPLY AT THE LARGE END OF THE FEATURE, AND ALL INTERNAL FEATURES AFFECTED BY THE DRAFT APPLY AT THE SMALL END OF THE FEATURE UNLESS OTHERWISE SPECIFIED.
6. 1 DEGREES DRAFT IN THE DIRECTION OF PULL IS PERMISSIBLE UNLESS OTHERWISE SPECIFIED.
7. THIS ENCLOSURE IS A PRESS FIT ASSEMBLY. FOR PERMANENT CLOSURE: A DROP ADHESIVE OR ULTRASONIC WELDING IS REQUIRED.
8. MATERIAL / COLOR: ABS PLASTIC IS STANDARD IN BLACK OR WHITE. CUSTOM MATERIALS AND COLORS ARE AVAILABLE UPON REQUEST FOR QUOTE.
9. PCB SIZES ARE RECOMMENDATIONS ONLY. FINAL SIZES AND VERIFICATION OF IT'S FIT ARE THE SOLE RESPONSIBILITY OF EACH OWNER.
10. THE GATE REMNANT FOR THIS ENCLOSURE IS LOCATED IN THIS POSITION TO MINIMIZE ANY COSMETIC IMPACT. IT IS HOWEVER VISIBLE AND VARIES IN SIZE / SHAPE. IT IS EASILY REMOVED WITH CLIPPERS. IF YOU WOULD LIKE NEW AGE TO CLIP THIS FOR YOU, PLEASE ASK YOUR SALES REPRESENTIVE FOR A FREE QUOTE.



R E V I S I O N					
REV.	DRAWN BY	ECO No	DESCRIPTION	DATE	APPROVED
1-7.1	M BOYER		COMPRESSED REVISION HISTORY SEE REV 7.3 FOR DETAILS	2007-May-21	D.C.
7.2	M BOYER	1823	INCLUDE TYPE C CONFIGURATION	2023-Nov-08	D.C.
7.3	M BOYER	00524	REMOVE .031 PCB TYPE C OPTION	2024-Apr-09	J.T.
7.4	M BOYER	00824	REMOVE REFERENCE TO COAXIAL CONNECTOR	2024-May-21	



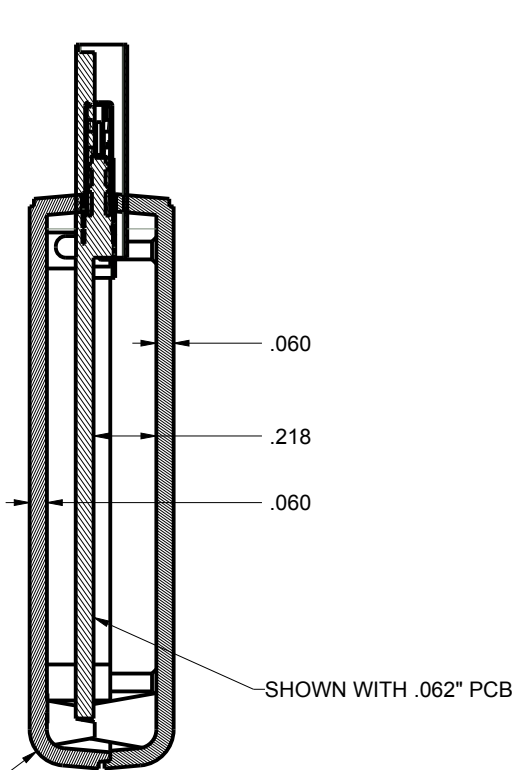
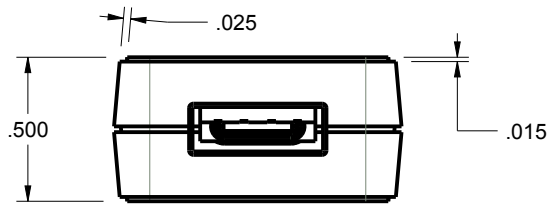
P201005(x) CONFIGURATIONS					
	-S	-U	-62S	-62U	-62C
201005 COVER	1		1		
201005 COVER w/ TYPE A USB OPENING		1		1	
201005 COVER w/ TYPE C USB OPENING					1
201005 BASE (.031" PCB)	1				
201005 BASE (.062" PCB)			1		
201005 BASE (.031" PCB) w/ TYPE A USB OPENING		1			
201005 BASE (.062" PCB) w/ TYPE A USB OPENING				1	
201005 BASE (.062" PCB) w/ TYPE C USB OPENING					1

ITEM	FILE NAME	DESCRIPTION	MATERIAL	COLOR	QTY.
4	USB-C_CONNECTOR	SMT USB-C	REFERENCE	CUSTOMER SUPPLIED	1
3	201005_PCB	201005 PCB - REFERENCE	.062" THICK	CUSTOMER SUPPLIED	1
2	201005_COVER	201005U COVER - STANDARD	ABS	BLACK or WHITE	1
1	201005_BASE	201005U BASE - STANDARD	ABS	BLACK or WHITE	1

**BILL OF MATERIALS**

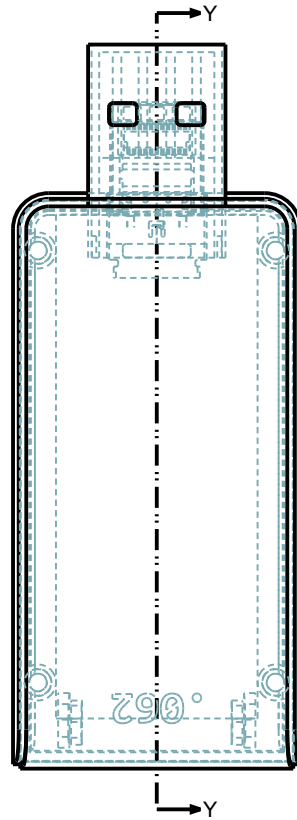
<b>THIRD ANGLE PROJECTION</b>  <b>DO NOT SCALE DRAWING</b>	TOLERANCES: UNLESS OTHERWISE SPECIFIED DIMENSIONS ARE IN U.S. INCHES. X.XX = .015 X.XXXX = .001 X.XXX = .010 X.X" = 1°	<b>NEW AGE ENCLOSURES</b> 2240 South Thornburg Street Santa Maria, CA. 93455 ph. (805) 595-1310 fax (805) 595-1024 <a href="http://www.newageenclosures.com">www.newageenclosures.com</a>
	<b>NEW AGE ENCLOSURES</b> Customer's Part No: 201005X	
APPROVAL BY DATE CHECK _____ ENG. _____ SCALE AS NOTED	DRAWN BY M BOYER DATE 2007-May-21	SIZE A DRAWING NAME 201005_R7_4 SHEET 1 OF 6 REV.DOC 7.4

# 201005 X ASSEMBLY

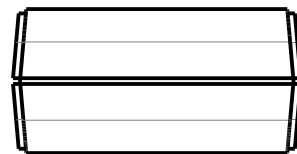
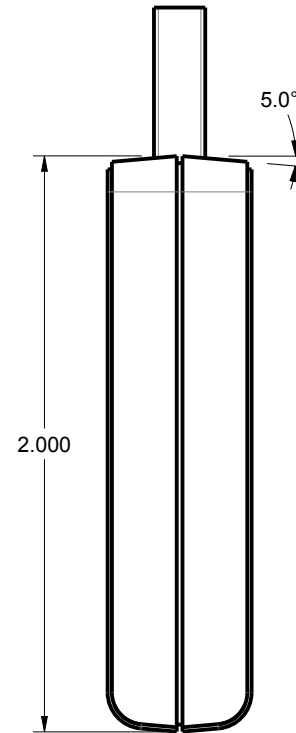


R.125

SECTION Y-Y



SCALE 1.500



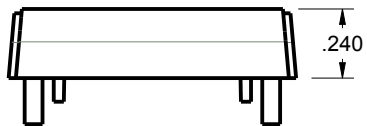
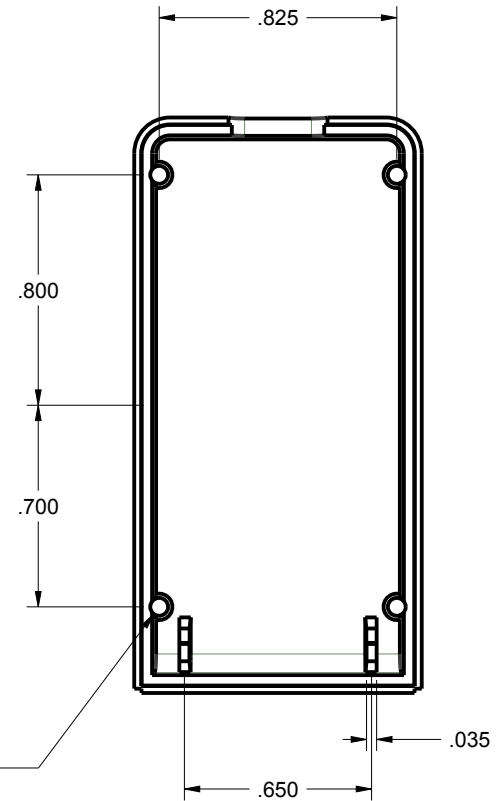
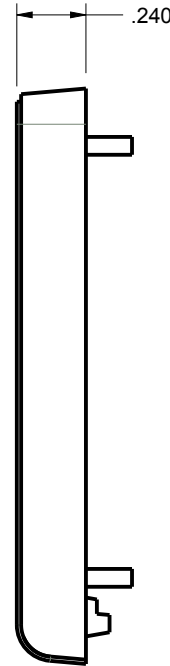
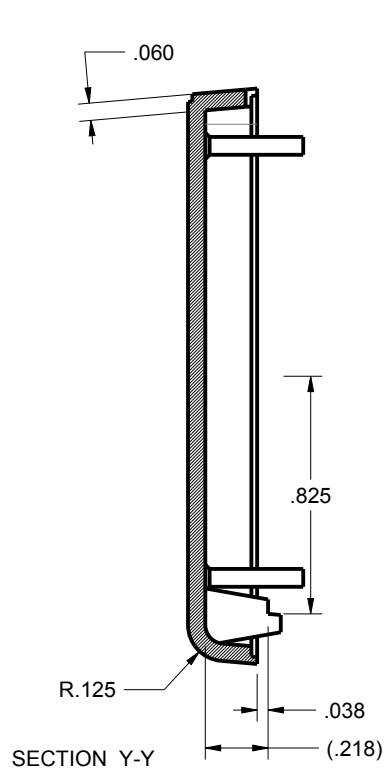
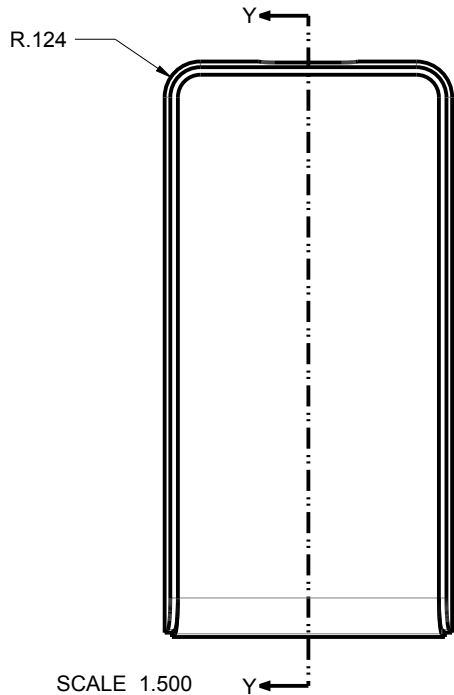
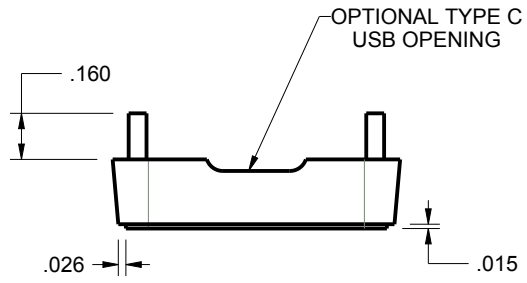
TOLERANCES: UNLESS OTHERWISE SPECIFIED DIMENSIONS ARE IN U.S. INCHES.	
X.XX = .015 X.XXXX = .001	
X.XXX = .010 X.X° = 1°	
NEW AGE ENCLOSURES	
Customer's Part No: 201005X	
APPROVAL	BY DATE
CHECK	
ENG.	
SCALE	AS NOTED
DRAWN BY	SIZE
M BOYER	A
2007-May-21	201005_R7_4

**NEW AGE ENCLOSURES**  
 2240 South Thornburg Street Santa Maria, CA. 93455  
 ph. (805) 595-1310 fax (805) 595-1024  
[www.newageenclosures.com](http://www.newageenclosures.com)

**STANDARD - USB DEVICE**  
**PXX-201005X-XXX**

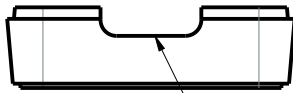
SHEET	REV.DOC
2 OF 6	7.4

# 201005C COVER

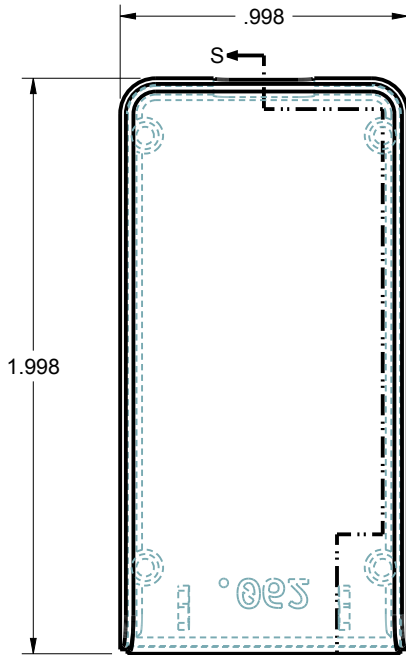


TOLERANCES: UNLESS OTHERWISE SPECIFIED DIMENSIONS ARE IN U.S. INCHES.		<b>NEW AGE ENCLOSURES</b>	
X.XX = .015 X.XXXX = .001		2240 South Thornburg Street Santa Maria, CA. 93455	
X.XXX = .010 X.X° = 1°		ph. (805) 595-1310 fax (805) 595-1024	
NEW AGE ENCLOSURES		www.newageenclosures.com	
Customer's Part No: 201005X			
APPROVAL	BY	DATE	
CHECK			
ENG.			
SCALE	AS NOTED		
DRAWN BY	SIZE	DRAWING NAME	SHEET
M BOYER	2007-May-21	A 201005_R7_4	3 OF 6
STANDARD - USB DEVICE PXX-201005X-XXX			REV.DOC 7.4

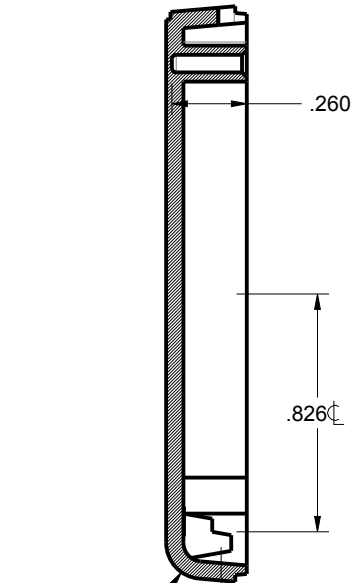
20100562C BASE



OPTIONAL TYPE C  
USB OPENING

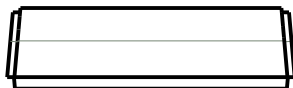
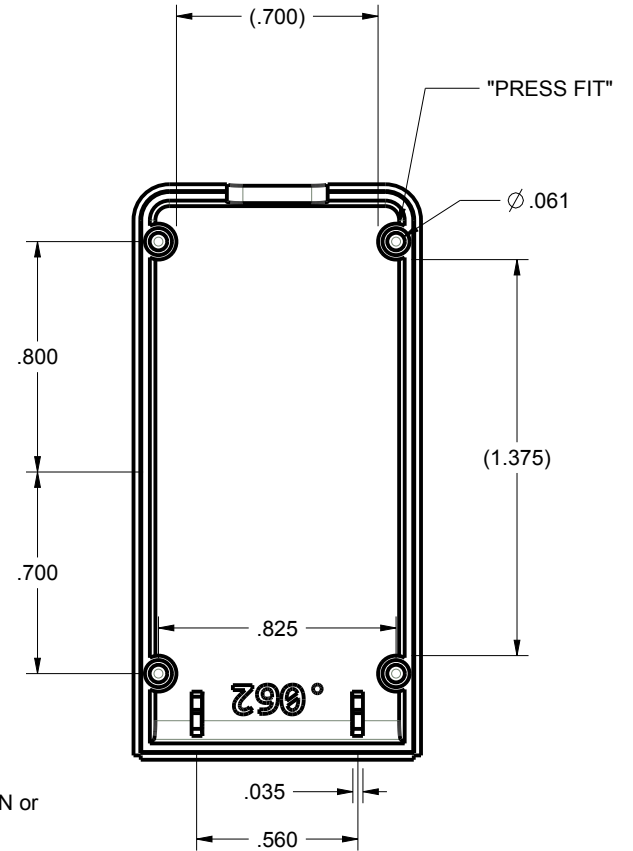
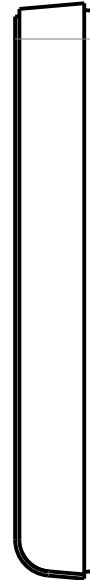


SCALE 1.500 S



R.125  
.089 FOR ".031" PCB CONFIGURATION or  
.120 FOR "-62" CONFIGURATION

SECTION S-S



TOLERANCES: UNLESS OTHERWISE SPECIFIED  
DIMENSIONS ARE IN U.S. INCHES.  
X.XX = .015 X.XXXX = .001  
X.XXX = .010 X.X° = 1°

**NEW AGE ENCLOSURES**  
2240 South Thornburg Street Santa Maria, CA. 93455  
ph. (805) 595-1310 fax (805) 595-1024

Customer's Part No: 201005X

www.newageenclosures.com

APPROVAL	BY	DATE
CHECK		
ENG.		
SCALE	AS NOTED	

**STANDARD - USB DEVICE**  
**PXX-201005X-XXX**

DRAWN BY  
M BOYER 2007-May-21

SIZE  
A 201005\_R7\_4

SHEET  
4 OF 6 REV.DOC  
7.4

# 201005 PCB - CUSTOMER SUPPLIED

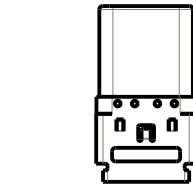
PCB SIZES ARE RECOMMENDATIONS ONLY. FINAL SIZES AND VERIFICATION OF IT'S FIT ARE THE SOLE RESPONSIBILITY OF THE OEM.

SUGGESTED (Reference)  
 USB 3.2 Gen2 TYPE C PLUG  
 CONNECTOR, HORIZONTAL, SMT  
 GLOBAL CONNECTOR TECHNOLOGY, LTD  
 www.gtc.co PN. USB4155

SUGGESTED (Reference)  
 TYPE A USB PLUG CONNECTOR  
 ACON, ADVANCED CONNECTEK INC.  
 PN. C-UAR70-00-00  
 www.acon/en-global/product/detail/378

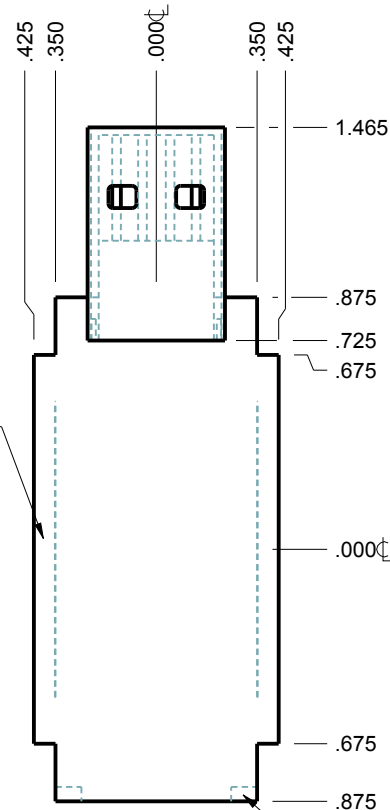


SCALE 1.500



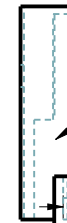
SCALE 1.500

EXTENDED SIDES  
 ARE OPTIONAL



SCALE 1.500

KEEP OUT ZONES  
 .090 x .050  
 2 PLACES



.030

FOR .062" PCB THICKNESS  
 ORDER "-62" CONFIGURATION

.062

TOLERANCES: UNLESS OTHERWISE SPECIFIED  
 DIMENSIONS ARE IN U.S. INCHES.  
 X.XX = .015 X.XXXX = .001  
 X.XXX = .010 X.X° = 1°

Customer's Part No: 201005X

APPROVAL	BY	DATE
CHECK		
ENG.		
SCALE	AS NOTED	

DRAWN BY  
 M BOYER  
 2007-May-21

**NEW AGE ENCLOSURES**  
 2240 South Thornburg Street Santa Maria, CA. 93455  
 ph. (805) 595-1310 fax (805) 595-1024  
 www.newageenclosures.com

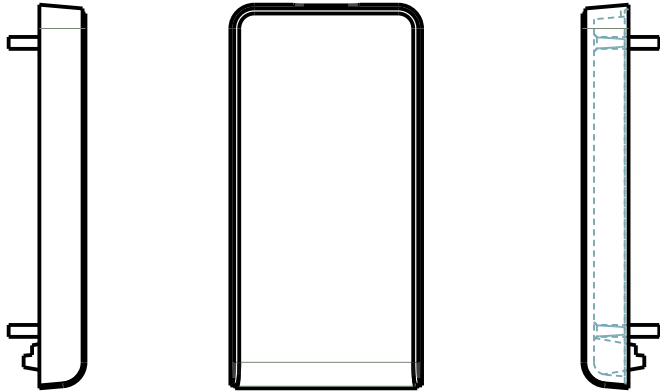
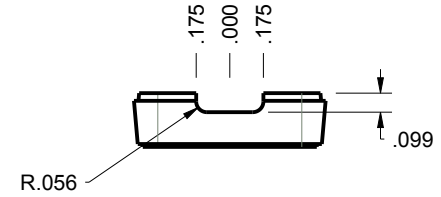
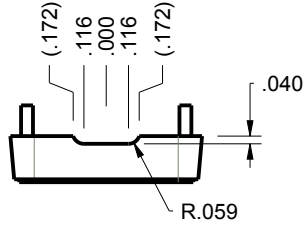
STANDARD - USB DEVICE  
 PXX-201005X-XXX

SIZE A	DRAWING NAME 201005_R7_4	SHEET 5 OF 6	REV.DOC 7.4
-----------	-----------------------------	-----------------	----------------

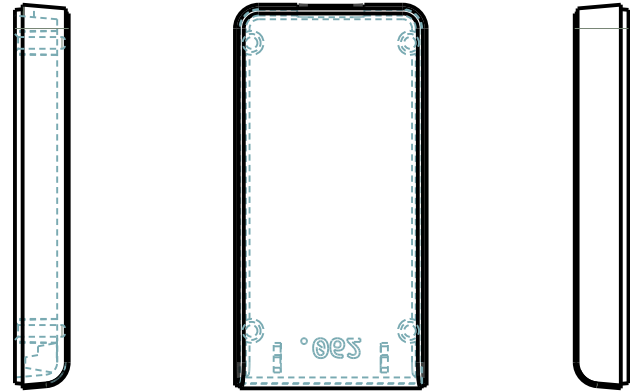
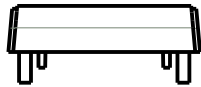
\*\* = RECOMMENDED BOARD THICKNESS IS .031" or .062" THICK, OPTIONS ARE AVAILABLE TO ALLOW OTHER THICKNESSES. ASK YOUR SALES REP FOR A QUOTE.

## 2nd OPERATION DETAILS

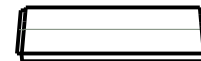
New Age Enclosures DELIVERS YOUR ENCLOSURE MARKET-READY WITH IN-HOUSE  
CNC MACHINING, PAD PRINTING, ASSEMBLY, AND FULFILLMENT.  
ALL SURFACES AND AREAS ARE AVAILABLE FOR CNC ALTERATION BY New Age Enclosures  
CALL (805) 595-1310 FOR PRICING AND SCHEDULE.  
THE INSIDE RADIUS OF ANY MACHINED FEATURES SHOULD BE NO SMALLER THAN .031"



201005U COVER  
SCALE 1.000



201005U BASE  
SCALE 1.000



### PXX-201005U-XXX COVER - ABS, BLACK

STEP NO	DESCRIPTION	CUTTER	FIXTURE	ORIENTATION	PROGRAM
1-C-C1	-	T2 = .062" EM	268	-	o1000
2-C-C2	-	T2 = .062" EM	268	-	o1001

### PXX-201005U-XXX BASE - ABS, BLACK

STEP NO	DESCRIPTION	CUTTER	FIXTURE	ORIENTATION	PROGRAM
3-B-C1	-	T2 = .062" EM	268	-	o1002
4-B-C2	-	T2 = .062" EM	268	-	o1003

TOLERANCES: UNLESS OTHERWISE SPECIFIED  
DIMENSIONS ARE IN U.S. INCHES.  
X.XX = .015 X.XXXX = .001  
X.XXX = .010 X.X° = 1°

Customer's Part No: 201005X

APPROVAL	BY	DATE
CHECK		
ENG.		
SCALE	AS NOTED	
DRAWN BY	M BOYER	
	2007-May-21	

## NEW AGE ENCLOSURES

2240 South Thornburg Street Santa Maria, CA. 93455  
ph. (805) 595-1310 fax (805) 595-1024  
[www.newageenclosures.com](http://www.newageenclosures.com)

### STANDARD - USB DEVICE PXX-201005X-XXX

SIZE	DRAWING NAME	SHEET	REV.DOC
A	201005_R7_4	6 OF 6	7.4